

Language diversity in NSW government schools in 2013

Centre for Education Statistics and Evaluation

This bulletin summarises the diversity of students with a language background other than English (LBOTE) who are enrolled in NSW government schools in 2013.

Introduction

In 2013, 69.1 per cent of students who are currently enrolled in NSW government schools come from homes where English is the only language (see Figure 1). The 2013 collection of language background data shows that almost one third (30.9 per cent) of students in NSW government schools come from homes where languages other than English are spoken. The proportion of LBOTE* students rose by 0.7 percentage points from 2012.

* See definition of LBOTE on page 11

Figure 1
Language background of students in NSW government schools in 2013

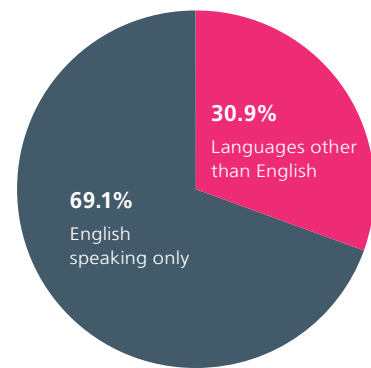
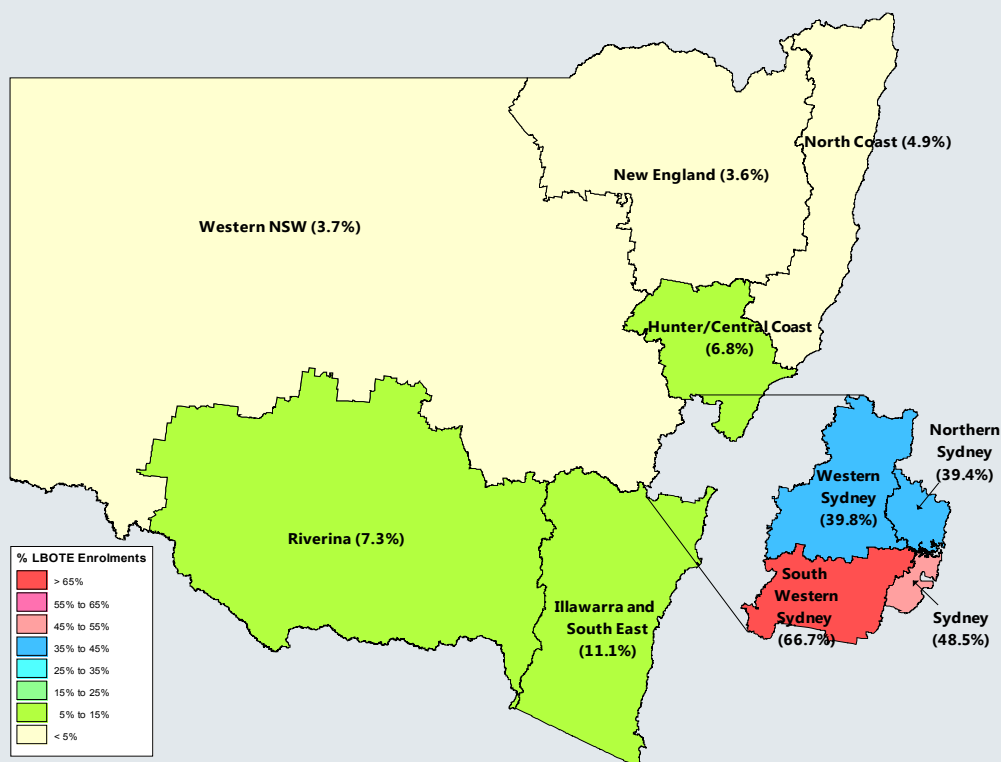


Figure 2 Percentage of students with a language background other than English by region in NSW



Note: 2013 represents a transition year from the DEC regional structure to the new principal networks. The Department has decided that 2013 data will continue to be reported according to region, but from 2014 onwards aggregate geographical data will be reported by ABS statistical division.

What are the language backgrounds of our students?

Of the total LBOTE students Arabic is the most common single language background with 31,072 or 13.2 per cent of all LBOTE students (See Table 1A).

Mandarin (8.6 per cent) and Cantonese (7.5 per cent) are the next two most common languages, which together comprise the majority (95 per cent) of Chinese language backgrounds. Vietnamese is the fourth largest single language background with 6.6 per cent of all LBOTE students (See Table 1A).

Of the 232 single language background groups recorded across NSW government schools, 44 had more than 1,000 students.

In March 2013, there were 235,106 NSW government school students identified as having a language background other than English, which comprises 30.9 per cent of the 761,274 NSW government school students overall.

Table 1A

Enrolments of students of language background other than English by language - 2012 and 2013 (by largest language groups in 2013)¹

Language ²	2012		2013	
	Students	% of Total LBOTE	Students	% of Total LBOTE
Chinese	39,719	17.3	40,106	17.1
<i>Mandarin</i>	19,329	8.4	20,334	8.6
<i>Cantonese</i>	18,268	8.0	17,609	7.5
<i>Other Chinese</i>	2,122	0.9	2,163	0.9
Arabic	30,171	13.2	31,072	13.2
Vietnamese	15,209	6.6	15,430	6.6
Hindi	9,146	4.0	9,387	4.0
Greek	9,157	4.0	9,239	3.9
Filipino / Tagalog	8,173	3.6	8,473	3.6
Samoan	7,299	3.2	7,720	3.3
Korean	7,130	3.1	7,419	3.2
Spanish	6,654	2.9	6,793	2.9
Italian	5,908	2.6	5,864	2.5
Tongan	4,003	1.7	4,008	1.7
Macedonian	4,082	1.8	3,988	1.7
Tamil	3,712	1.6	3,849	1.6
Turkish	3,952	1.7	3,842	1.6
Indonesian	3,609	1.6	3,754	1.6
Urdu	3,321	1.4	3,649	1.6
Bengali	2,967	1.3	3,245	1.4
Serbian	3,348	1.5	3,185	1.4
German	3,054	1.3	3,095	1.3
Punjabi	2,775	1.2	3,023	1.3
Japanese	2,674	1.2	2,880	1.2
French	2,709	1.2	2,766	1.2
Thai	2,510	1.1	2,646	1.1
Assyrian & Chaldean ²	2,554	1.1	2,639	1.1
Persian (excluding Dari)/Farsi	2,411	1.1	2,525	1.1
Khmer	2,302	1.0	2,353	1.0
Dari	2,223	1.0	2,274	1.0
Maori (New Zealand)	2,097	0.9	2,140	0.9
Russian	1,951	0.9	2,109	0.9
Gujarati	1,607	0.7	1,852	0.8
Sinhalese	1,636	0.7	1,725	0.7
Portuguese	1,592	0.7	1,662	0.7
Croatian	1,698	0.7	1,628	0.7
Nepali	1,233	0.5	1,440	0.6
Fijian	1,480	0.6	1,439	0.6
Dutch	1,347	0.6	1,356	0.6
Afrikaans	1,168	0.5	1,189	0.5
Malayalam	959	0.4	1,166	0.5
Maori (Cook Island)	1,106	0.5	1,160	0.5
Telugu	1,016	0.4	1,160	0.5
Maltese	1,145	0.5	1,089	0.5
Lao	1,059	0.5	1,032	0.4
Other language groups	17,240	7.5	17,735	7.5
Total LBOTE	229,106	100.0	235,106	100.0

Notes:

1. The table is ordered by the largest language groups for language groups with 1000 or more students in 2013. Language groups with fewer than 1000 students in 2013 are included in 'Other language groups'.
2. The 'Assyrian & Chaldean' language group includes Assyrian Neo-Aramaic (ASCL 4206), Chaldean Neo-Aramaic (ASCL 4207) and Assyrian (ASCL 4203).
3. See the definition of LBOTE on page 11 for the reporting rule used to determine the language background for students from households where multiple languages are spoken.

Table 1B**Enrolments of students of language background other than English by language and level of schooling - March 2013 (by largest language groups¹)**

Language ⁴	Primary		Secondary		All LBOTE students ²		
	Students	% of Primary LBOTE	Students	% of Secondary LBOTE	Students	% of Total LBOTE	Cumulative
Chinese	19,073	14.2	20,906	21.0	40,106	17.1	17.1
<i>Mandarin</i>	10,249	7.6	10,037	10.1	20,334	8.6	-
<i>Cantonese</i>	7,732	5.8	9,815	9.9	17,609	7.5	-
<i>Other Chinese</i>	1,092	0.8	1,054	1.1	2,163	0.9	-
Arabic	18,475	13.8	12,288	12.3	31,072	13.2	30.3
Vietnamese	7,979	5.9	7,330	7.4	15,430	6.6	36.8
Hindi	5,840	4.4	3,507	3.5	9,387	4.0	40.8
Greek	6,003	4.5	3,181	3.2	9,239	3.9	44.8
Filipino / Tagalog	4,447	3.3	3,958	4.0	8,473	3.6	48.4
Samoan	4,347	3.2	3,331	3.3	7,720	3.3	51.6
Korean	4,095	3.1	3,312	3.3	7,419	3.2	54.8
Spanish	4,194	3.1	2,559	2.6	6,793	2.9	57.7
Italian	3,559	2.7	2,267	2.3	5,864	2.5	60.2
Tongan	2,226	1.7	1,754	1.8	4,008	1.7	61.9
Macedonian	2,373	1.8	1,596	1.6	3,988	1.7	63.6
Tamil	2,354	1.8	1,478	1.5	3,849	1.6	65.2
Turkish	2,056	1.5	1,757	1.8	3,842	1.6	66.9
Indonesian	2,220	1.7	1,512	1.5	3,754	1.6	68.5
Urdu	2,316	1.7	1,308	1.3	3,649	1.6	70.0
Bengali	2,127	1.6	1,078	1.1	3,245	1.4	71.4
Serbian	1,659	1.2	1,517	1.5	3,185	1.4	72.7
German	1,852	1.4	1,235	1.2	3,095	1.3	74.1
Punjabi	1,999	1.5	1,018	1.0	3,023	1.3	75.3
Japanese	1,879	1.4	990	1.0	2,880	1.2	76.6
French	1,799	1.3	959	1.0	2,766	1.2	77.7
Thai	1,524	1.1	1,111	1.1	2,646	1.1	78.9
Assyrian & Chaldean ³	1,485	1.1	1,137	1.1	2,639	1.1	80.0
Persian (excluding Dari) / Farsi	1,366	1.0	1,151	1.2	2,525	1.1	81.1
Khmer	1,301	1.0	1,043	1.0	2,353	1.0	82.1
Dari	1,101	0.8	1,163	1.2	2,274	1.0	83.0
Maori (New Zealand)	1,157	0.9	973	1.0	2,140	0.9	83.9
Russian	1,416	1.1	690	0.7	2,109	0.9	84.8
Gujarati	1,368	1.0	484	0.5	1,852	0.8	85.6
Sinhalese	982	0.7	736	0.7	1,725	0.7	86.4
Portuguese	1,076	0.8	578	0.6	1,662	0.7	87.1
Croatian	912	0.7	706	0.7	1,628	0.7	87.8
Nepali	980	0.7	457	0.5	1,440	0.6	88.4
Fijian	799	0.6	629	0.6	1,439	0.6	89.0
Dutch	886	0.7	469	0.5	1,356	0.6	89.6
Afrikaans	721	0.5	465	0.5	1,189	0.5	90.1
Malayalam	832	0.6	332	0.3	1,166	0.5	90.6
Maori (Cook Island)	639	0.5	512	0.5	1,160	0.5	91.1
Telugu	824	0.6	335	0.3	1,160	0.5	91.6
Maltese	638	0.5	447	0.4	1,089	0.5	92.0
Lao	561	0.4	466	0.5	1,032	0.4	92.5
Other language groups	10,746	8.0	6,883	6.9	17,735	7.5	100.0
Total LBOTE	134,186	100.0	99,608	100.0	235,106	100.0	

Notes:

- The table is ordered by the largest language groups for language groups with 1000 or more students in 2013. Language groups with fewer than 1000 students in 2013 are included in 'Other language groups'.
- All LBOTE students includes SSP students, which are not included in primary or secondary student numbers.
- The 'Assyrian & Chaldean' language group includes Assyrian Neo-Aramaic (ASCL 4206), Chaldean Neo-Aramaic (ASCL 4207) and Assyrian (ASCL 4203).
- See the definition of LBOTE on page 11 for the reporting rule used to determine the language background for students from households where multiple languages are spoken.

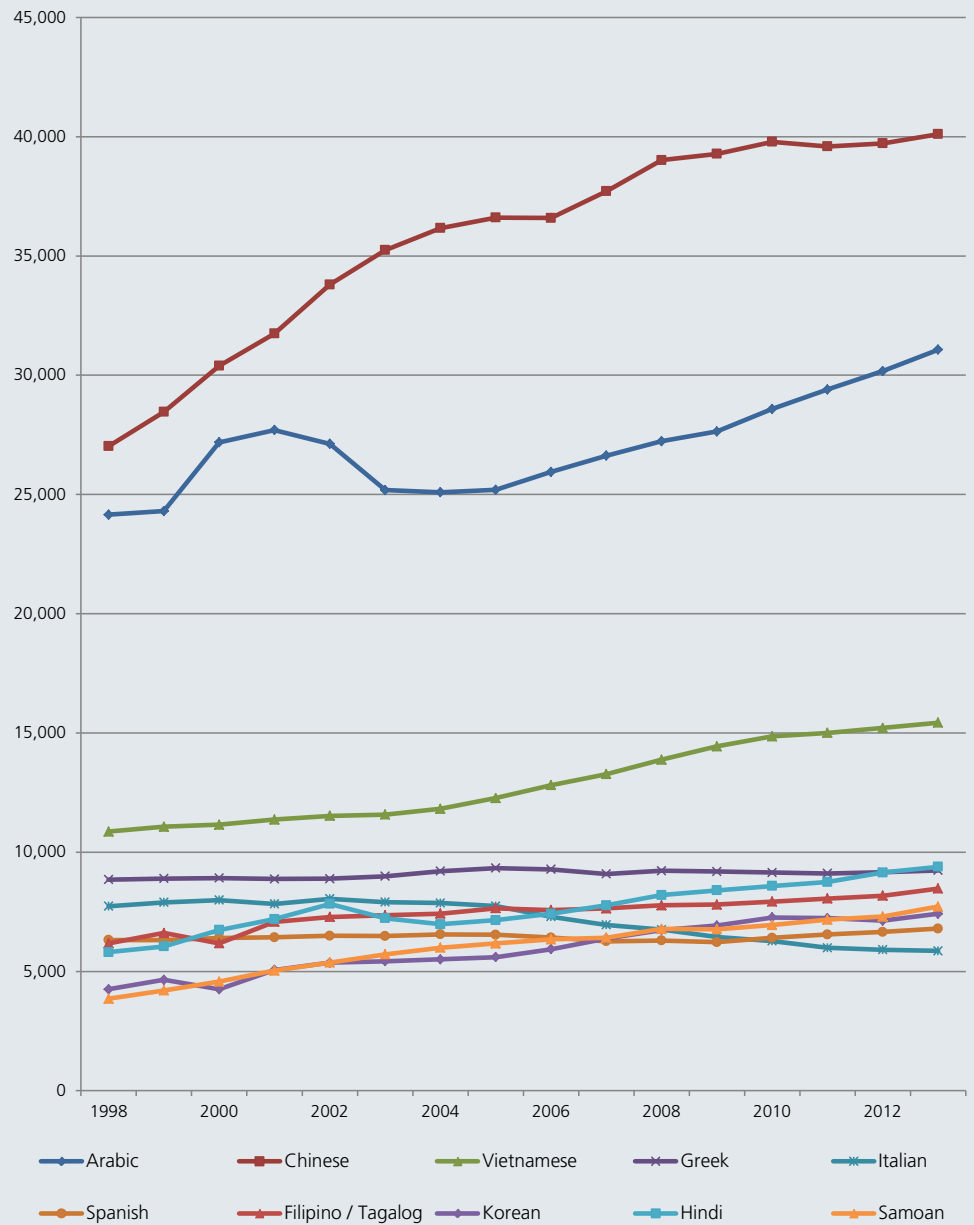
Trends for the largest language groups over the period 1998 to 2013

The percentage of LBOTE students in NSW government schools rose 0.7 percentage points from 30.2 per cent in 2012 to 30.9 per cent in 2013.

Since 1998, the top three language backgrounds have grown significantly as shown in Figure 3, with Chinese growing 48 per cent, while Arabic and Vietnamese have grown 29 per cent and 42 per cent respectively over that period.

There has been a decline of 24 per cent in Italian over the period from 7,733 in 1998 to 5,864 in 2013.

Figure 3
Top ten language backgrounds other than English - 1998 to 2013





Where are LBOTE students located?

LBOTE students are concentrated in the Sydney metropolitan area, including Northern Sydney, Western Sydney, South Western Sydney and Sydney, which together enrol 90.2 per cent of all LBOTE students in NSW government schools. In comparison, these four regions account for 56.4 per cent of all students enrolled in NSW government schools. Figure 4 shows that South Western Sydney has the highest percentage of LBOTE student enrolments (66.7 per cent) with 87,938 LBOTE students.

In non-metropolitan regions, fewer than 15 per cent of students enrolled in NSW government schools have a language background other than English (see Figure 4)

For a breakdown of enrolments by language, region and number of language groups in each region, see Table 2.

Figure 4
Percentage of students with language background other than English by region - 2013

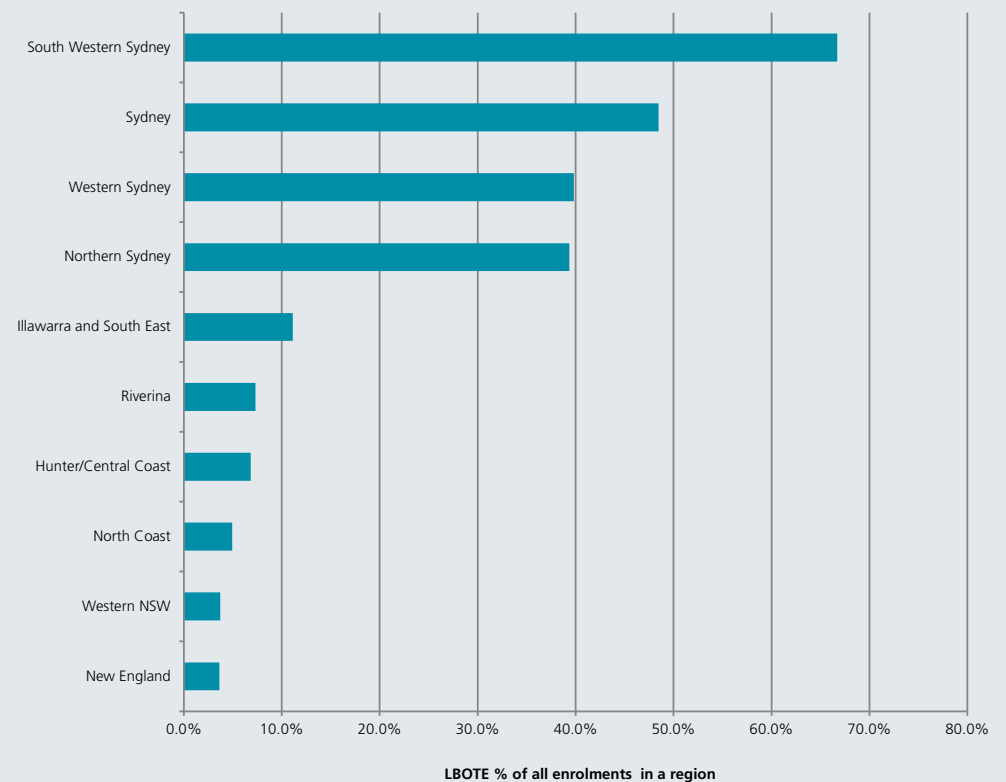


Table 2

LBOTE enrolments by language, region and number of language groups – March 2013

Language	Hunter/ Central Coast	Illawarra and South East	New England	North Coast	Northern Sydney	Riverina	South Western Sydney	Sydney	Western NSW	Western Sydney	State Total	As a % of Total LBOTE
Chinese	595	409	49	146	12,346	102	9,493	11,599	70	5,297	40,106	17.1
<i>Mandarin</i>	297	220	21	56	7,160	42	3,464	6,100	38	2,936	20,334	8.6
<i>Cantonese</i>	267	146	22	72	4,899	48	4,774	5,164	27	2,190	17,609	7.5
<i>Other Chinese</i>	31	43	6	18	287	12	1,255	335	5	171	2,163	0.9
Arabic	282	470	53	50	835	122	21,577	4,564	68	3,051	31,072	13.2
Vietnamese	151	165	22	45	511	15	11,920	2,049	13	539	15,430	6.6
Hindi	191	98	14	38	1,343	54	3,228	725	32	3,664	9,387	4.0
Greek	298	376	5	65	716	49	1,696	5,265	37	732	9,239	3.9
Filipino / Tagalog	597	355	83	216	895	144	1,656	1,187	142	3,198	8,473	3.6
Samoan	226	91	17	30	85	182	4,441	353	26	2,269	7,720	3.3
Korean	168	46	5	16	3,500	4	1,572	944	13	1,151	7,419	3.2
Spanish	379	439	23	181	1,041	69	2,209	1,473	40	939	6,793	2.9
Italian	361	421	16	92	969	231	1,690	1,433	70	581	5,864	2.5
Tongan	187	90	4	28	265	107	1,670	570	40	1,047	4,008	1.7
Macedonian	274	1,098	3	4	101	3	997	1,386	11	111	3,988	1.7
Tamil	57	12	10	8	582	10	903	245	12	2,010	3,849	1.6
Turkish	45	204	2	12	223	32	1,580	604	20	1,120	3,842	1.6
Indonesian	186	124	19	72	667	23	924	1,218	14	507	3,754	1.6
Urdu	60	54	10	14	313	41	1,584	316	17	1,240	3,649	1.6
Bengali	69	29	19	4	227	30	1,339	851	13	664	3,245	1.4
Serbian	95	316	2	6	323	12	1,658	426	20	327	3,185	1.4
German	340	303	37	302	962	43	161	626	55	266	3,095	1.3
Punjabi	53	44	13	203	299	149	498	139	14	1,611	3,023	1.3
Japanese	141	99	18	163	1,374	11	174	712	18	170	2,880	1.2
French	216	144	35	204	939	35	256	657	23	257	2,766	1.2
Thai	214	195	17	149	500	31	542	707	40	251	2,646	1.1
Assyrian & Chaldean	6	11	0	4	19	0	2,417	95	3	84	2,639	1.1
Persian (excluding Dari)/Farsi	31	66	4	15	882	5	524	147	14	837	2,525	1.1
Khmer	38	22	0	6	35	1	2,096	60	7	88	2,353	1.0
Dari	17	12	1	23	140	14	1,011	36	4	1,016	2,274	1.0
Maori (New Zealand)	172	125	24	82	93	62	575	447	55	505	2,140	0.9
Russian	96	51	11	29	466	13	281	874	40	248	2,109	0.9
Gujarati	35	19	2	4	207	38	231	167	5	1,144	1,852	0.8
Sinhalese	50	51	10	12	568	35	158	129	18	694	1,725	0.7
Portuguese	73	159	19	49	317	9	310	550	7	169	1,662	0.7
Croatian	84	175	1	15	224	4	493	274	26	332	1,628	0.7
Nepali	29	15	11	2	175	106	331	427	16	328	1,440	0.6
Fijian	86	29	18	21	64	101	572	264	31	253	1,439	0.6
Dutch	160	103	16	94	478	34	48	253	22	148	1,356	0.6
Afrikaans	172	46	22	35	427	56	112	109	48	162	1,189	0.5
Malayalam	30	20	5	8	218	5	298	144	8	430	1,166	0.5
Maori (Cook Island)	29	92	5	6	22	84	427	191	6	298	1,160	0.5
Telugu	27	13	4	4	181	6	254	86	4	581	1,160	0.5
Maltese	69	101	6	19	32	0	287	63	8	504	1,089	0.5
Lao	13	11	9	11	30	25	876	30	3	24	1,032	0.4
<i>Other languages</i>	1,077	942	170	720	2,829	275	4,869	2,797	311	3,745	17,735	7.5
Total LBOTE	7,479	7,645	814	3,207	36,423	2,372	87,938	45,192	1,444	42,592	235,106	100
<i>Number of different language groups</i>	<i>151</i>	<i>156</i>	<i>96</i>	<i>130</i>	<i>160</i>	<i>112</i>	<i>191</i>	<i>189</i>	<i>115</i>	<i>184</i>	<i>232</i>	

Notes:

1. The table is ordered by the largest language groups for language groups with 1000 or more students in 2013 overall. Language groups with fewer than 1000 students in 2013 are included in 'Other language groups'.
2. The 'Assyrian & Chaldean' language group includes Assyrian Neo-Aramaic (ASCL 4206), Chaldean Neo-Aramaic (ASCL 4207) and Assyrian (ASCL 4203).
3. See definition of LBOTE on page 11 for the reporting rule used to determine the language background for students from households where multiple languages are spoken.

Where are Primary, Secondary and Special Purpose LBOTE students located?

For Northern Sydney and Sydney regions, the proportion of LBOTE students as a percentage of enrolments is more than 10 percentage points higher for secondary students than for primary students (see Table 3A). Contributing factors are likely to include: Full fee paying international students who are predominantly Year 10-12 students enrolling in schools in these two regions; a relatively large number of selective schools (which have very high LBOTE enrolments) in these two regions drawing some of their students from the other regions; and the slightly higher rate of retention of LBOTE students to Year 12 relative to English speaking students.

Table 3A
Enrolments of students of language background other than English, by region and level of schooling, March 2013

Region Name	Primary			Secondary			SSP			All Students		
	LBOTE Students	All Students	LBOTE as % of enrolments	LBOTE Students	All Students	LBOTE as % of enrolments	LBOTE Students	All Students	LBOTE as % of enrolments	LBOTE Students	All Students	LBOTE as % of enrolments
Hunter/Central Coast	4,219	62,129	6.8	3,210	46,717	6.9	50	580	8.6	7,479	109,426	6.8
Illawarra and South East	4,417	39,841	11.1	3,198	28,629	11.2	30	325	9.2	7,645	68,795	11.1
New England	518	12,759	4.1	293	9,666	3.0	3	78	3.8	814	22,503	3.6
North Coast	1,862	35,681	5.2	1,343	29,057	4.6	2	108	1.9	3,207	64,846	4.9
Northern Sydney	20,248	58,606	34.5	16,062	33,595	47.8	113	335	33.7	36,423	92,536	39.4
Riverina	1,464	18,438	7.9	896	13,769	6.5	12	217	5.5	2,372	32,424	7.3
South Western Sydney	51,032	76,900	66.4	36,241	53,789	67.4	665	1,156	57.5	87,938	131,845	66.7
Sydney	24,567	55,932	43.9	20,460	36,836	55.5	165	448	36.8	45,192	93,216	48.5
Western NSW	840	21,738	3.9	597	16,748	3.6	7	204	3.4	1,444	38,690	3.7
Western Sydney	25,019	64,328	38.9	17,308	41,899	41.3	265	766	34.6	42,592	106,993	39.8
Total	134,186	446,352	30.1	99,608	310,705	32.1	1,312	4,217	31.1	235,106	761,274	30.9

Notes:

LBOTE enrolments for 2013 are compared to enrolments (headcount) in March 2013. LBOTE Bulletins published in years prior to 2013 have compared LBOTE enrolments to February school enrolments of the same year. The change to March data means that a more accurate measure of total enrolments is used as the denominator because they are extracted from ERN at the same point in time as the LBOTE collection.

For further details, see the Notes on page 11.

As a percentage of enrolments in any particular academic year, the percentage of LBOTE students in NSW government schools is steady from Kindergarten to Year 10 at approximately 30 per cent. This percentage is higher for the senior secondary years with 33.5 per cent for Year 11 and 36.5 per cent for Year 12 (see Table 3B). This is indicative of higher rates of retention to Year 12 of LBOTE students compared to English speaking students, as well as the increased number of full fee paying international students in these years.

Table 3B
Enrolments of students of language background other than English, by region and level of schooling, March 2013

Region	Primary									SSP
	Kinder	Year 1	Year 2	Year 3	Year 4	Year 5	Year 6	Support	Total Primary	Total SSP
Hunter/Central Coast	641	650	614	572	569	581	549	43	4,219	50
Illawarra and South East	618	630	628	636	627	587	630	61	4,417	30
New England	87	75	81	80	59	61	74	1	518	3
North Coast	282	288	279	259	251	236	254	13	1,862	2
Northern Sydney	3,421	3,021	2,929	2,769	2,669	2,740	2,628	71	20,248	113
Riverina	219	230	215	190	216	197	189	8	1,464	12
South Western Sydney	7,761	7,536	7,248	6,962	7,026	6,972	6,699	828	51,032	665
Sydney	3,962	3,663	3,473	3,407	3,281	3,369	3,199	213	24,567	165
Western NSW	142	130	130	101	113	98	113	13	840	7
Western Sydney	3,975	3,893	3,559	3,443	3,366	3,252	3,198	333	25,019	265
State	21,108	20,116	19,156	18,419	18,177	18,093	17,533	1,584	134,186	1,312
<i>As % Enrolments</i>	<i>30.4%</i>	<i>29.9%</i>	<i>29.6%</i>	<i>30.1%</i>	<i>30.1%</i>	<i>30.7%</i>	<i>30.0%</i>	<i>27.3%</i>	<i>30.1%</i>	<i>31.1%</i>

Region	Secondary								Region Total	As % Region
	Year 7	Year 8	Year 9	Year 10	Year 11	Year 12	Support	Total Secondary		
Hunter/Central Coast	537	560	559	535	538	424	57	3,210	7,479	6.8
Illawarra and South East	511	488	562	580	553	378	126	3,198	7,645	11.1
New England	63	52	42	45	42	46	3	293	814	3.6
North Coast	231	232	223	231	233	168	25	1,343	3,207	4.9
Northern Sydney	2,374	2,489	2,443	2,653	3,032	2,716	355	16,062	36,423	39.4
Riverina	168	151	168	149	134	121	5	896	2,372	7.3
South Western Sydney	5,528	5,591	5,554	6,088	6,325	5,472	1,683	36,241	87,938	66.7
Sydney	3,104	3,175	3,163	3,399	3,689	3,287	643	20,460	45,192	48.5
Western NSW	100	95	110	108	77	95	12	597	1,444	3.7
Western Sydney	2,598	2,821	2,799	2,875	3,063	2,711	441	17,308	42,592	39.8
State	15,214	15,654	15,623	16,663	17,686	15,418	3,350	99,608	235,106	30.9
<i>As % Enrolments</i>	<i>30.4%</i>	<i>30.6%</i>	<i>30.1%</i>	<i>31.0%</i>	<i>33.5%</i>	<i>36.5%</i>	<i>37.8%</i>	<i>32.1%</i>	<i>30.9%</i>	

Notes:

LBOTE enrolments for 2013 are compared to enrolments (headcount) in March 2013. LBOTE Bulletins published in years prior to 2013 have compared LBOTE enrolments to February school enrolments of the same year. The change to March data means that a more accurate measure of total enrolments is used as the denominator because they are extracted from ERN at the same point in time as the LBOTE collection.

For further details, see the Notes on page 11.

What languages do newly arrived students speak?

Languages spoken by 'new arrival' students are counted on a different basis than LBOTE. The students in this table are counted based on the main languages spoken by the students themselves, while the LBOTE count includes students who speak another language and those with a parent/carer who speaks another language. The total number of new arrival students in 2012 was 6,717.

Table 4
Main languages spoken by new arrival students 2007 to 2012

2007		2008		2009		2010		2011		2012	
Language	Students	Language	Students	Language	Students	Language	Students	Language	Students	Language	Students
Mandarin	1,027	Mandarin	1,061	Mandarin	1,227	Mandarin	840	Mandarin	940	Mandarin	981
Korean	744	Korean	725	Arabic	793	Arabic	643	Arabic	746	Arabic	574
Arabic	561	Arabic	714	Korean	625	Korean	478	Korean	352	Korean	371
Cantonese	415	Filipino (Tagalog)	405	Cantonese	403	Filipino (Tagalog)	317	Filipino (Tagalog)	334	Filipino (Tagalog)	362
Filipino (Tagalog)	299	Cantonese	365	Vietnamese	357	Cantonese	293	Cantonese	296	Vietnamese	349
Vietnamese	289	Vietnamese	290	Filipino (Tagalog)	332	Vietnamese	227	Vietnamese	251	Samoan	305
Hindi	253	Hindi	279	Hindi	213	Hindi	203	Samoan	235	Cantonese	279
Dari	234	Samoan	169	Assyrian	197	Samoan	177	Hindi	208	Hindi	220
Samoan	159	Indonesian	159	Thai	179	Dari	168	Tamil	159	Urdu	192
Urdu	137	Spanish	155	Nepalese	149	Indonesian	152	Persian (excluding Dari)/Farsi	151	Persian (excluding Dari)/Farsi	165
Persian (excluding Dari)/Farsi	135	Dari	148	Spanish	148	Nepalese	151	Spanish	142	Nepalese	149
Punjabi	135	Thai	134	German	143	Urdu	147	Nepalese	140	Spanish	149
Thai	130	German	122	Indonesian	133	Spanish	142	Indonesian	140	Thai	133
German	127	Assyrian	116	Punjabi	132	Thai	133	Urdu	132	Japanese	119
Indonesian	123	Tamil	111	Dari	116	Tamil	122	Thai	116	Indonesian	118
Spanish	110	French	110	Gujarati	112	Assyrian	109	Japanese	115	Tamil	97
Japanese	107	Urdu	107	Samoan	112	Japanese	106	Dari	105	Greek	92
Dinka	106	German	122	Tamil	110	Bengali	98	Bengali	93	Bengali	91
<i>Others</i>	<i>2,145</i>	<i>Others</i>	<i>2,281</i>	<i>Others</i>	<i>2,072</i>	<i>Others</i>	<i>1,999</i>	<i>Others</i>	<i>1,919</i>	<i>Others</i>	<i>1,971</i>
Total	7,326	Total	7,573	Total	7,553	Total	6,505	Total	6,574	Total	6,717

Notes:

- 1 The New Arrivals Program (NAP) survey is conducted twice per year (March and October) and includes only new enrolments in the 6 months prior to the NAP survey. Therefore the 2013 NAP data is not available at the time this bulletin was prepared.
- 2 New arrival students include only those who have enrolled in school in the 6 months prior to the NAP survey, speak a language other than English as their first language, are enrolling in an Australian school for the first time, are in need of initial ESL instruction, and have been in Australia less than 6 months (or for Kindergarten students less than 18 months).
- 3 The student count in this table is based on main languages spoken by the students themselves. This differs from LBOTE student counts which include languages spoken by the student and/or their parents or carers.

Source: Multicultural Education Unit, NSW Department of Education and Communities, ESL/New Arrivals Program Surveys 2007 to 2012

What language backgrounds do preschool students come from?

The 100 NSW government preschools¹ enrolled 1,858 students of language background other than English in 2013, representing 44 per cent of all NSW government preschool enrolments (see Table 5).

The proportion of LBOTE students enrolled in NSW government preschools is likely not to represent the proportion of LBOTE students enrolled in all NSW preschools. Government preschools only cater for 7.8 per cent of all preschool enrolments in NSW. Most children receiving a preschool education are enrolled at a government funded community preschool (40.6 per cent) or in a long day care centre which offers a preschool program (49.3 per cent)⁵.

Preschool enrolments are reported by largest language groups. LBOTE enrolments less than 10 (approximately 0.5 per cent) are included in Other Language Groups.

Table 5
Enrolments of government preschool¹ students of language background other than English – largest language groups – March 2013

Language	Students ²	As a % of all preschool LBOTE ³
Arabic	303	16.3
Vietnamese	284	15.3
Chinese	172	9.3
<i>Mandarin</i>	77	4.1
<i>Cantonese</i>	68	3.7
<i>Chinese other</i>	27	1.5
Samoan	107	5.8
Urdu	82	4.4
Filipino/Tagalog	63	3.4
Bengali	60	3.2
Hindi	57	3.1
Punjabi	50	2.7
Spanish	42	2.3
Khmer	36	1.9
Tongan	36	1.9
Gujarati	33	1.8
Macedonian	29	1.6
Korean	29	1.6
Greek	25	1.3
Indonesian	22	1.2
Italian	22	1.2
Turkish	21	1.1
Aboriginal English	21	1.1
Assyrian & Chaldean	20	1.1
Maori (New Zealand)	18	1.0
Tamil	17	0.9
Japanese	17	0.9
Thai	16	0.9
Serbian	15	0.8
Dari	14	0.8
Telugu	14	0.8
Malayalam	12	0.6
Lao	11	0.6
Fijian	11	0.6
Croatian	10	0.5
Other language groups ⁴	189	10.2
Total LBOTE	1,858	100
LBOTE as a % of preschool enrolment³	44%	

Notes:

- 1 Preschools include the 99 preschools attached to government primary/infant schools and the John Brothie Nursery School. Not included are the government funded community preschools and long day centres that provide a preschool program, which provide the majority of preschool education in NSW.
- 2 Students include children enrolled in a preschool or an Early Intervention program that is run by a NSW government school. These government preschool classes provide full-time or part-time schooling at pre-primary level.
- 3 LBOTE as a percentage of preschool enrolment uses March 2013 enrolment data
- 4 Other language groups includes 101 language groups
- 5 The number of children enrolled in government and non-government preschools as well as in long day care with preschool programs was sourced from the Australian Bureau of Statistics publication 4240.0 2012 *Preschool Education, Australia* (page 18).

Explanatory Notes

The census of students from language backgrounds other than English (LBOTE) was taken on 8 March 2013 in all NSW government schools, including preschools, intensive English centres and distance education centres.

Since 1996, information on LBOTE students has been collected in the first half of the school year. Until 2012 comparative enrolment information for all students was extracted from the School Entitlement System (February enrolment data). From 2013, comparative enrolment information for all students was extracted from the total enrolment data during March, at the time the LBOTE data was collected.

1. New arrivals data

Table 4 (main languages spoken by newly arriving students (2007 to 2012)) is a table sourced from the Multicultural Education Unit analysis of data collected in three New Arrivals data collections undertaken each year. The table notes that the student count is based on languages spoken by the students themselves and is therefore different from other LBOTE student counts in the bulletin.

2. Language groups reported

Tables are reported using the 'largest language groups'. The 'standard reporting groups' tables, which had been used up until 2010, have become out of date.

3. Australian Standard Classification of Languages

Several of the smaller language groupings have changed with the release of a revised Australian Standard Classification of Languages (1267.0) by the Australian Bureau of Statistics in August 2011. For information on languages, refer to Australian Standard Classification of Languages, Australian Bureau of Statistics (ASCL catalogue 1267.0).

Definitions

1. LBOTE

Language background other than English: students from language backgrounds other than English are those in whose home a language other than English is spoken by the student, parents, or other primary caregivers.

For students where **multiple languages** are spoken at home, priority is given first to the primary language spoken by the student and then to that spoken by those caregivers recorded on enrolment forms and in ERN as parent 1 and parent 2 in that order.

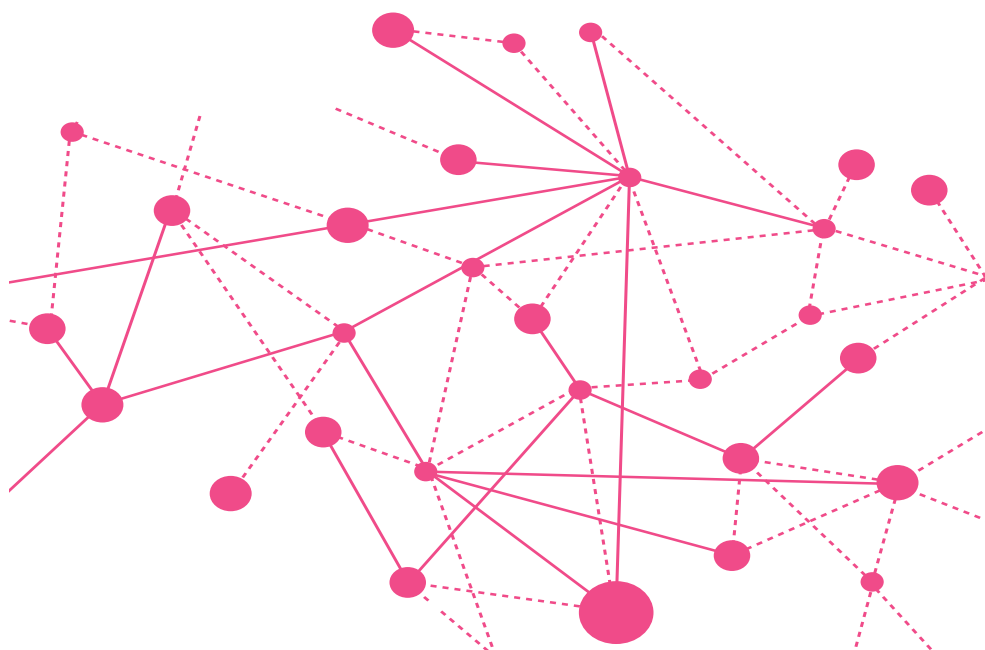
2. New arrivals

New arrival students include only those who have enrolled in school in the 6 months prior to the survey.

New arrival students:

- speak a language other than English as their first language
- are enrolling in an Australian school for the first time
- are in need of initial ESL instruction
- have been in Australia less than 6 months (or for Kindergarten students less than 18 months).

The student count of new arrivals is based on main languages spoken by the students themselves. This differs from LBOTE student count which includes languages spoken by the student and/or their parents or carers.



Contact Details

For more information about the Centre for Education Statistics and Evaluation, please contact us:

E cese@det.nsw.edu.au

W www.cese.nsw.gov.au



Centre for Education Statistics and Evaluation
Office of Education
GPO Box 33
Sydney NSW 2001
Australia
T 02 9561 1220
E cese@det.nsw.edu.au
www.cese.nsw.gov.au

© January 2014
NSW Department of Education and Communities



**Education &
Communities**
Office of Education