

NSW Foundation Spatial Data Framework:

Water Theme

Dataset/product title: NSW Fuzzy Extent Water Line

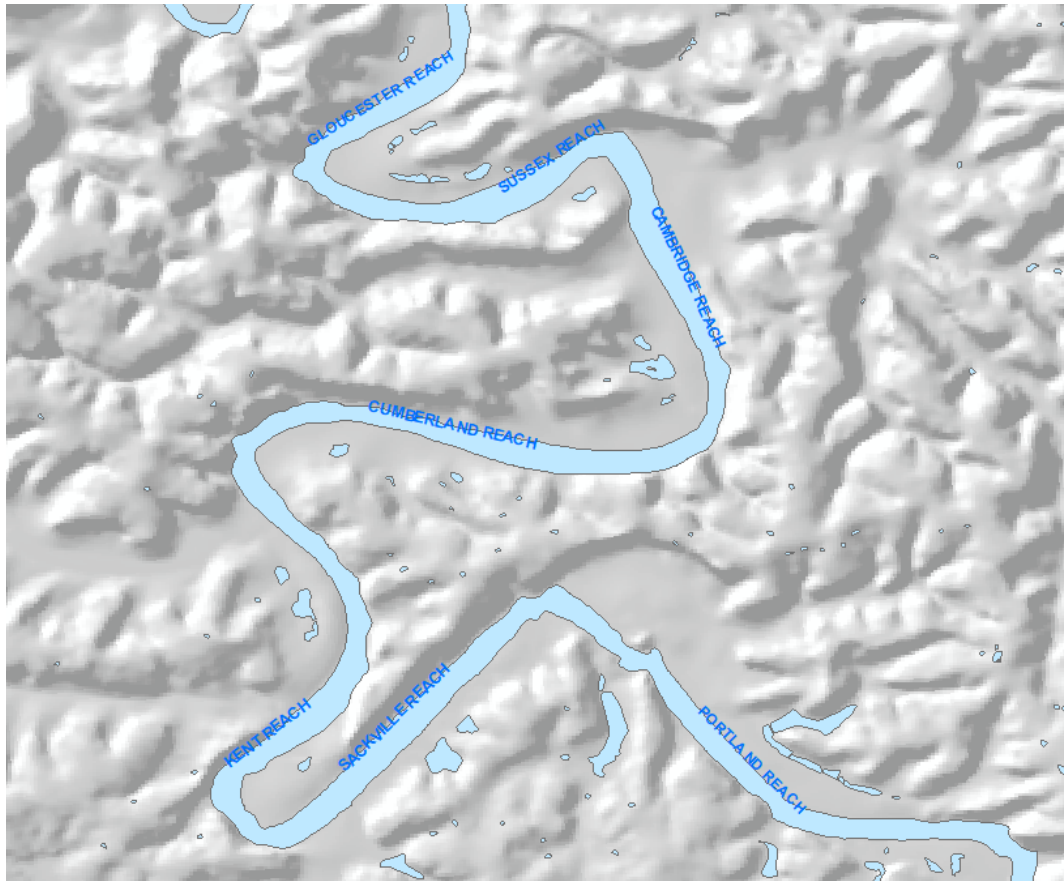


Image depicts sample of the NSW Fuzzy Extent Water Line © DFSI Spatial Services 2018

Dataset/product description	NSW Fuzzy Extent Water Line is a linear feature class representing the approximate extents of formally named water features that have relatively indistinct name extent. Fuzzy extent water lines features include Anabranh, Arm, Bend, Canal, Channel, Cowal, Passage, Reach, River Bend, River Feature, and Strait.
Dataset uses	Water security is one of Australia's major challenges. Key users of the hydrology data are NSW State and Local Government agencies as well as Federal Government agencies. These bodies use this data to better manage State and Local Government assets. This hydrology data provides the NSW component of the Australian Hydrological Geospatial Fabric which is a critical input to the Australian Water Resources Information System.

	<p>More widespread use of the hydrology data is also found in emergency management response and recovery efforts, hazard mitigation or disaster risk reduction, climate change, natural resource assessment, environmental planning and monitoring, insurance, mining and agriculture.</p>
Current status	<p>Spatial Services continuously updates this theme with information sourced from relevant stakeholders and custodians; by data verification from other internal and external databases; research and through Spatial Services' regular cycle of updating from aerial imagery and elevation data.</p>
Standards and specifications	<p>Metadata for the relevant Spatial Services datasets are required to comply with AS/NZS ISO 19115 ANZLIC Metadata Profile v1.1, ISO 19115-2 and ISO 19139. AS/NZS ISO 4819:2011</p>
Access and licensing	<p>Spatial Services, a division of the Department of Finance, Services and Innovation (DFSI) creates and manages Intellectual Property for the Crown in right of New South Wales.</p> <p>Acquisition of this data is subject to the customer entering into an appropriate Creative Commons license agreement.</p> <p>To the extent that Creative Commons licensing applies, all data and other material produced by Spatial Services constitutes Crown copyright.</p> <p>Spatial Services has applied the Creative Commons Attribution 3.0 Australia Licence. Spatial Services asserts the right to be attributed as author of the original material in the following manner:</p> <div data-bbox="525 1317 940 1462" data-label="Image"> <p>The image shows the Creative Commons Attribution-NonCommercial 3.0 Australia License logo. It consists of three circular icons in a row: the first contains 'CC', the second contains a person icon, and the third contains an equals sign. Below these icons, the letters 'BY' and 'NC' are displayed in a black bar.</p> </div> <p>© Spatial Services [date of extraction]</p> <p>Additional terms for the use of Spatial Services material</p> <p>Any derived products which are created will be required to clearly mark the date that any extractions from the Spatial Services Spatial Database occurred.</p> <p>All Intellectual Property which is owned by Spatial Services should only be loaded on any external cloud platforms if Spatial Services' Intellectual Property remains unchanged, maintained and preserved.</p>
Metadata	<p>NSW Fuzzy Extent Water Line</p>
Updates	<p>Continuous as described above.</p>

Custodian agency and contact	Name: DFSI Spatial Services Address: 346 Panorama Ave Bathurst NSW 2795 Email: SS-SDS@finance.nsw.gov.au
Aggregator(s)	Name: DFSI Spatial Services Address: 346 Panorama Ave Bathurst NSW 2795 Email: SS-Environmental@finance.nsw.gov.au
Distributor(s)	Name: DFSI Spatial Services Address: 346 Panorama Ave Bathurst NSW 2795 Email: SS-SDS@finance.nsw.gov.au