

# NSW Foundation Spatial Data Framework:

## Water Theme

### Dataset/product title: NSW Hydro Area

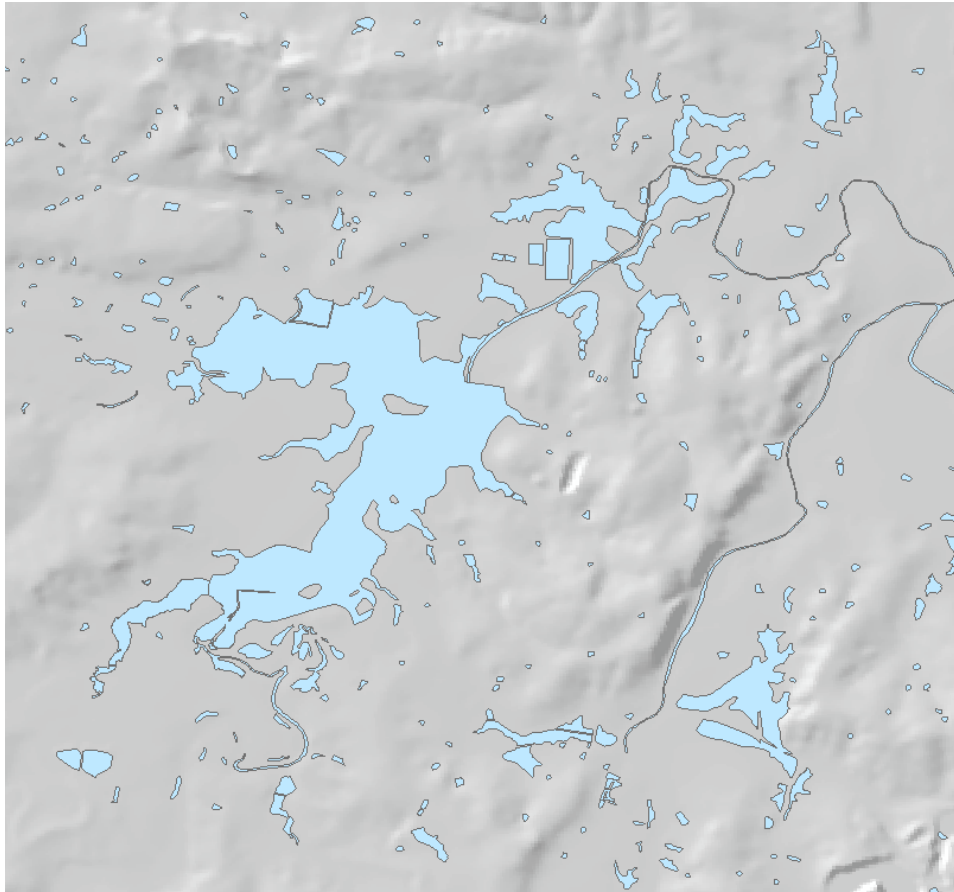


Image depicts sample of the NSW Hydro Area dataset © DFSI Spatial Services 2018

<b>Dataset/product description</b>	<p>NSW Hydro Area is a polygon feature class defining hydrographic feature types. This feature class is divided into waterbody area and water course.</p> <p>Waterbody is a standard body of inland water of which flow is minor. Waterbody may be natural waterbody or man-made waterbody.</p> <p>Water course is a way or course through which water may pass.</p> <p>Hydro area feature class is also classified as perennial, non-perennial or mainly dry.</p>
------------------------------------	--

<p><b>Dataset uses</b></p>	<p>Water security is one of Australia’s major challenges.</p> <p>Key users of the hydrology data are NSW State and Local Government agencies as well as Federal Government agencies. These bodies use this data to better manage State and Local Government assets. This hydrology data provides the NSW component of the Australian Hydrological Geospatial Fabric which is a critical input to the Australian Water Resources Information System.</p> <p>More widespread use of the hydrology data is also found in emergency management response and recovery efforts, hazard mitigation or disaster risk reduction, climate change, natural resource assessment, environmental planning and monitoring, insurance, mining and agriculture.</p>
<p><b>Current status</b></p>	<p>Spatial Services continuously updates this theme with information sourced from relevant stakeholders and custodians; by data verification from other internal and external databases; research and through Spatial Services’ regular cycle of updating from aerial imagery and elevation data.</p>
<p><b>Standards and specifications</b></p>	<p>Metadata for the relevant Spatial Services datasets are required to comply with AS/NZS ISO 19115 ANZLIC Metadata Profile v1.1, ISO 19115-2 and ISO 19139. AS/NZS ISO 4819:2011</p>
<p><b>Access and licensing</b></p>	<p>Spatial Services, a division of the Department of Finance, Services and Innovation (DFSI) creates and manages Intellectual Property for the Crown in right of New South Wales.</p> <p>Acquisition of this data is subject to the customer entering into an appropriate Creative Commons license agreement.</p> <p>To the extent that Creative Commons licensing applies, all data and other material produced by Spatial Services constitutes Crown copyright.</p> <p>Spatial Services has applied the <a href="#">Creative Commons Attribution 3.0 Australia Licence</a>. Spatial Services asserts the right to be attributed as author of the original material in the following manner:</p> <div data-bbox="525 1671 940 1816" data-label="Image"> <p>The image shows the Creative Commons Attribution-NonCommercial 3.0 Australia License logo. It consists of three circular icons in a row: the first contains the letters 'cc', the second contains a stylized person icon, and the third contains an equals sign. Below these icons, the letters 'BY' and 'ND' are displayed in a bold, sans-serif font.</p> </div> <p>© Spatial Services [date of extraction]</p>

	<p><b>Additional terms for the use of Spatial Services material</b></p> <p>Any derived products which are created will be required to clearly mark the date that any extractions from the Spatial Services Spatial Database occurred.</p> <p>All Intellectual Property which is owned by Spatial Services should only be loaded on any external cloud platforms if Spatial Services' Intellectual Property remains unchanged, maintained and preserved.</p>
<b>Metadata</b>	<a href="#">NSW Hydro Area</a>
<b>Updates</b>	Continuous as described above.
<b>Custodian agency and contact</b>	<p>Name: DFSI Spatial Services  Address: 346 Panorama Ave Bathurst NSW 2795  Email: SS-SDS@finance.nsw.gov.au</p>
<b>Aggregator(s)</b>	<p>Name: DFSI Spatial Services  Address: 346 Panorama Ave Bathurst NSW 2795  Email: SS-Environmental@finance.nsw.gov.au</p>
<b>Distributor(s)</b>	<p>Name: DFSI Spatial Services  Address: 346 Panorama Ave Bathurst NSW 2795  Email: SS-SDS@finance.nsw.gov.au</p>