



Education  
Centre for Education  
Statistics & Evaluation

CESE STATISTICAL BULLETIN ISSUE 4

# Schools and Students: 2014 Statistical Bulletin

Centre for Education Statistics and Evaluation



# 2014 Statistical Bulletin Summary

## NSW Government

### Full-time equivalent (FTE) enrolments

Primary enrolments	456,151.0
Secondary enrolments	302,339.7
SSP enrolments	5,207.0
<b>Total enrolments</b>	<b>763,697.7</b>

### Aboriginal and Torres Strait Islander students

Total Aboriginal & Torres Strait Islander enrolments	51,612.6
Per cent Aboriginal & Torres Strait Islander enrolments	6.8%

### Part-time students

Number of part-time students	2,383
FTE enrolments	1,453.7

### Preschool students

Number of preschool students	4,415
FTE enrolments	2,428.3

### Students with language background other than English (LBOTE)

LBOTE enrolments	242,850
LBOTE enrolments as per cent of total enrolments	31.6%

### Attendance rate (Semester 1)

Primary (Years 1 - 6)	94.7
Secondary (Years 7 - 10)	90.3
<b>Years 1 - 10 (Including support)</b>	<b>93.1</b>

### Average primary class size

Kindergarten to Year 6	24.0
------------------------	------

### HSC Year 12 student completions

HSC awards	39,340
------------	--------

### NSW government schools

Primary schools	1,600
Separate infants schools	17
Central/community schools	67
Secondary schools	398
Schools for specific purposes (SSP)	114
Environmental education centres (EEC)	23
<b>Total government schools</b>	<b>2,219</b>

Preschools attached to primary/infants schools	99
Separate preschools	1
<b>Total preschools</b>	<b>100</b>

## NSW Non-Government

### Full-time equivalent (FTE) enrolments

Primary enrolments	200,688.7
Secondary enrolments	203,934.4
<b>Total enrolments</b>	<b>404,623.1</b>

### NSW non-government schools

Primary schools	491
Secondary schools	144
Primary/Secondary schools	237
Special schools	46
<b>Total non-government schools</b>	<b>918</b>

## Data Sources

The 2014 Statistical Bulletin reports NSW government schools data from:

- The census of students undertaken on Friday, 1 August 2014.
- The census of students of language background other than English undertaken on Friday, 7 March 2014.
- The K-6 Class Size Audit undertaken on Friday, 14 March 2014.
- The K-6 languages programs: includes languages programs (in school hours) collection undertaken in May 2014.
- The Years 7-9 language participation collection undertaken in August 2014.
- The attendance collection undertaken in June 2014 for Semester 1.

The bulletin also includes non-government schools data which were collected by the Australian Government Department of Education and Training on Friday, 1 August 2014.

## Further Reference

Additional information about schools and students in NSW is available from the Centre for Education Statistics and Evaluation's (CESE) other statistical publications:

- CESE Bulletin Issue 8 - Language Diversity in NSW, 2014.
- CESE Bulletin Issue 12 - School Attendance 2014 (Semester 1).
- CESE Bulletin Issue 13 - Inbrief Mid-year Census 2014

The publications can be obtained from CESE's website: <http://www.cese.nsw.gov.au/publications>

---

# Table of Contents

## List of Tables

### Schools

<b>Table 1</b> NSW government schools by classification, 2004-2014	5
<b>Table 2</b> NSW government schools by type and SA4 groupings, mid-year 2014	7
<b>Table 3</b> NSW government schools by FOEI bands and SA4 groupings, mid-year 2014	8
<b>Table 4</b> NSW government schools by MCEECDYA remoteness and SA4 groupings, mid-year 2014	8
<b>Table 5</b> List of college arrangements, mid-year 2014	9
<b>Table 6</b> Secondary education schools by selective, specialist and coeducational status, mid-year 2014	9

### Classes

<b>Table 7</b> Average primary class sizes by year, 1997 and 2004-2014	10
---	----

### Students

<b>Table 8</b> Enrolments (FTE) in NSW government schools, 1970, 1980, 1990, 1994-2014	11
<b>Table 9</b> Age-grade distribution of students in NSW government schools, mid-year 2014, primary students by age and year of schooling (excluding support students)	12
<b>Table 10</b> Age-grade distribution of students in NSW government schools, mid-year 2014, secondary students by age and year of schooling (excluding support students)	12
<b>Table 11</b> Age-grade distribution of students in NSW government schools, mid-year 2014 part-time secondary students by age and year of schooling	14
<b>Table 12</b> Enrolments in support classes and schools for specific purposes (SSPs) by category, mid-year 2014	14
<b>Table 13</b> Age-grade distribution of students in NSW government schools, mid-year 2014 students in schools for specific purposes by age and category	16
<b>Table 14</b> Age distribution of students in NSW government preschools and early intervention programs, mid-year 2014	17
<b>Table 15</b> Enrolments (FTE) in distance education by year of schooling, mid-year 2014	17
<b>Table 16</b> Enrolments (FTE) of Aboriginal students by SA4 groupings and grade groups in NSW government schools, mid-year 2014	18
<b>Table 17</b> Enrolment of students of language background other than English (LBOTE) in NSW government schools, March 2014 by SA4 groupings and grade groups	19
<b>Table 18</b> Enrolments (FTE) in NSW government schools by FOEI quarters and SA4 groupings, April 2014	20

---

## Study Patterns

<b>Table 19</b> Primary students in NSW government schools studying a language other than English by year of schooling and language, May 2014	21
<b>Table 20</b> Language participation Year 7-9 by gender and year of schooling, August 2014	22
<b>Table 21</b> Course enrolments in Year 10 subjects in NSW government schools, 2014	23
<b>Table 22</b> Course enrolments in Year 11 and Year 12 subjects in NSW government schools, 2014	26

## Progress Measures

<b>Table 23</b> Apparent retention in NSW government schools, 2004-2014	30
<b>Table 24</b> NSW government school HSC completions, Year 12 students only, 2004-2014	31
<b>Table 25</b> Schools attendance rates by Aboriginality and year level, 2014	32

## List of Figures

<b>Figure 1</b> NSW government schools, 2004-2014	6
<b>Figure 2</b> Primary and secondary enrolments (FTE) in NSW government schools, 2004-2014	11
<b>Figure 3</b> Enrolments (FTE) in NSW government schools by year of schooling and gender, mid-year 2014	13
<b>Figure 4</b> Enrolments (FTE) in NSW government schools by age and gender, mid-year 2014	13
<b>Figure 5</b> Enrolments in support classes in ordinary schools and SSPs by category, mid-year 2014	15
<b>Figure 6</b> Apparent retention (%) in NSW government schools, 2004-2014	30
<b>Figure 7</b> Full year attendance rates (%) in NSW government schools, Aboriginal, non-Aboriginal and all students, Years 1-10, 2014	32

Table 1

## NSW government schools by classification, 2004-2014

Classification	2004	2005	2006	2007	2008	2009	2010	2011	2012	2013	2014
<b>Primary and infants schools</b>											
Class 1	74	71	59	59	58	58	56	62	67	74	85
Class 2	273	266	261	261	262	262	262	267	266	262	265
Class 3	354	358	342	342	343	343	324	308	313	307	296
Class 4	351	348	377	375	381	383	391	393	377	378	378
Class 5	447	455	443	433	424	423	425	419	425	412	406
Class 6	136	137	145	155	156	147	154	164	157	167	170
Separate Infants	17	17	17	17	17	17	17	17	17	17	17
<b>Total</b>	<b>1,652</b>	<b>1,652</b>	<b>1,644</b>	<b>1,642</b>	<b>1,641</b>	<b>1,633</b>	<b>1,629</b>	<b>1,630</b>	<b>1,622</b>	<b>1,617</b>	<b>1,617</b>
<b>Central and community schools</b>											
Class 1	3	3	3	4	4	4	4	4	4	4	4
Class 2	11	9	10	9	9	9	7	6	7	6	5
Class 3	22	23	23	24	22	22	21	20	19	21	22
Class 4	24	25	25	24	26	26	29	31	31	30	30
Class 8	3	3	4	4	4	4	4	4	4	4	4
Class 9	3	3	2	2	2	2	2	2	2	2	2
<b>Total</b>	<b>66</b>	<b>66</b>	<b>67</b>	<b>67</b>	<b>67</b>	<b>67</b>	<b>67</b>	<b>67</b>	<b>67</b>	<b>67</b>	<b>67</b>
<b>Secondary schools</b>											
Class 8	139	142	141	134	132	132	139	138	140	140	137
Class 9	256	255	256	263	265	266	259	260	258	258	261
<b>Total</b>	<b>395</b>	<b>397</b>	<b>397</b>	<b>397</b>	<b>397</b>	<b>398</b>	<b>398</b>	<b>398</b>	<b>398</b>	<b>398</b>	<b>398</b>
<b>Other schools</b>											
Schools for Specific Purposes	108	108	108	114	114	113	113	113	113	113	114
Environmental Education Centres	23	23	23	23	23	23	23	23	23	23	23
<b>Total Schools</b>	<b>2,244</b>	<b>2,246</b>	<b>2,239</b>	<b>2,243</b>	<b>2,242</b>	<b>2,234</b>	<b>2,230</b>	<b>2,231</b>	<b>2,223</b>	<b>2,218</b>	<b>2,219</b>

**Classifications:**

Primary and infants schools:  
 Class 1 - More than 700 enrolments  
 Class 2 - 451 to 700 enrolments  
 Class 3 - 301 to 450 enrolments  
 Class 4 - 160 to 300 enrolments  
 Class 5 - 26 to 159 enrolments  
 Class 6 - Less than 26 enrolments

Central schools:  
 Class 1 - More than 450 enrolments  
 Class 2 - 301 to 450 enrolments  
 Class 3 - 160 to 300 enrolments  
 Class 4 - 26 to 159 enrolments

Community schools:  
 Class 8 - More than 900 enrolments  
 Class 9 - 900 or less enrolments

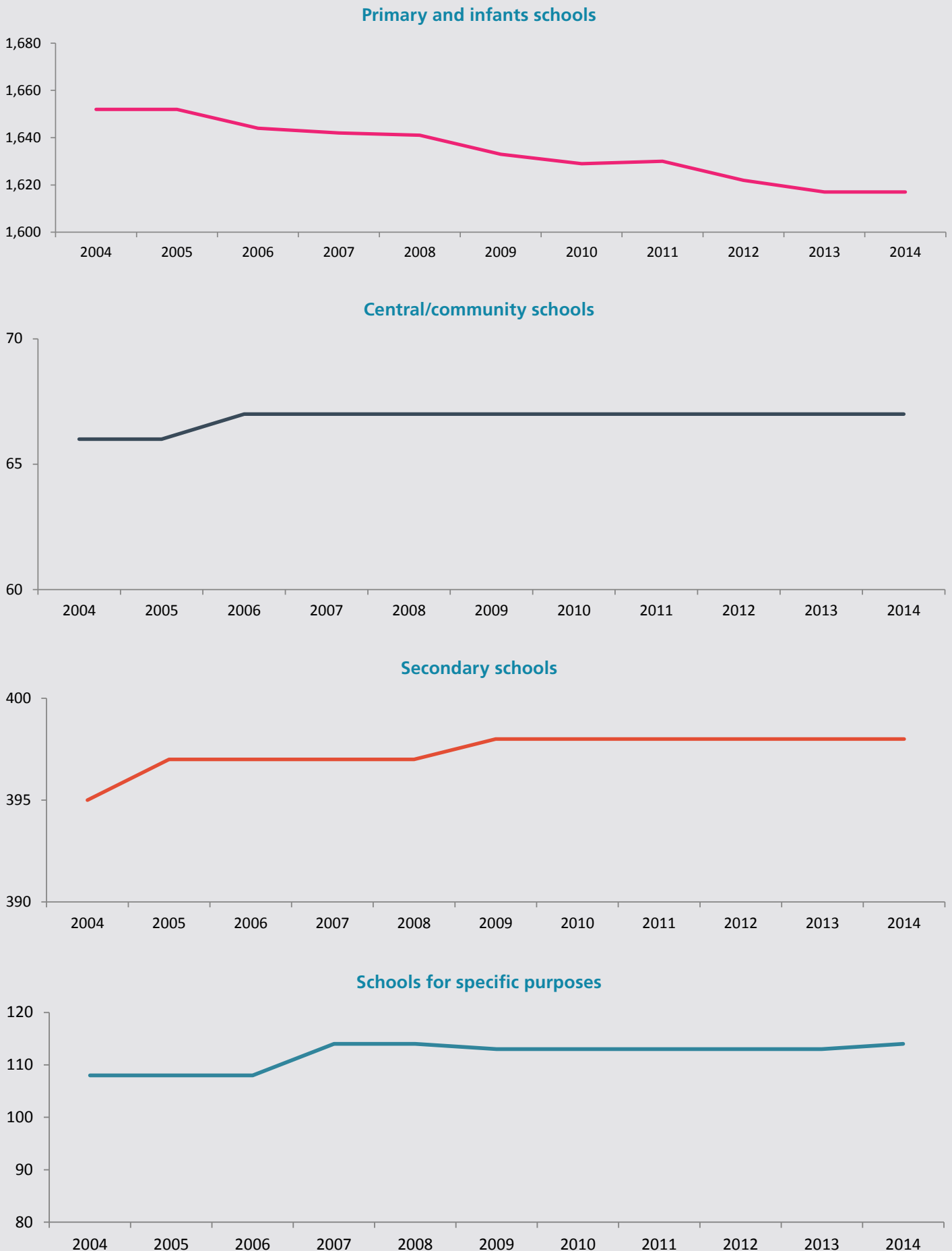
Secondary schools:  
 Class 8 - More than 900 enrolments  
 Class 9 - 900 or less enrolments

**Notes:**

- The classifications used in the table are not based on the 2014 actual enrolments collected through the mid-year census. The classifications are based on the staffing entitlement classifications reviewed periodically by the Classification Review Committee.
- See explanatory notes 1, 2 and 3.

Figure 1

NSW government schools, 2004-2014



**Table 2****NSW government schools by type and SA4 groupings, mid-year 2014**

SA4 Groupings	Primary	Central/ Community	Secondary	SSPs	EECs	Total
Sydney-North	98	0	32	13	2	145
Sydney-Inner	89	1	28	10	1	129
Sydney-South	117	1	38	15	2	173
Sydney-South West	114	0	38	12	3	167
Sydney-West	112	0	35	16	0	163
Sydney-North West	108	0	28	4	3	143
<b>Sydney Total</b>	<b>638</b>	<b>2</b>	<b>199</b>	<b>70</b>	<b>11</b>	<b>920</b>
North East NSW	218	8	39	4	2	271
North West NSW	219	28	44	7	3	301
South West NSW	210	24	41	11	2	288
South East NSW	188	3	39	8	2	240
Central Coast, Newcastle	144	2	36	14	3	199
<b>Regional Total</b>	<b>979</b>	<b>65</b>	<b>199</b>	<b>44</b>	<b>12</b>	<b>1,299</b>
<b>NSW</b>	<b>1,617</b>	<b>67</b>	<b>398</b>	<b>114</b>	<b>23</b>	<b>2,219</b>

**Notes:**

- Alexandria Park Community School, Batlow Technology School, Dubbo School of Distance Education, Evans River Community School, Hunter School of Performing Arts, Lucas Heights Community School, Southern Cross School, and Wadalba Community School are included with central/community schools.

**Table 3**

**NSW government schools by FOEI bands and SA4 groupings, mid-year 2014**

SA4 Groupings	Less than 50	50 to 90	90 to 110	110 to 150	150 or more	N/A	Total	≥ 110 (%)
Sydney-North	125	10	5		2	3	145	1.4%
Sydney-Inner	80	32	4	10	1	2	129	8.5%
Sydney-South	40	63	31	26	11	2	173	21.4%
Sydney-South West	1	20	32	67	44	3	167	66.5%
Sydney-West	28	27	25	42	41		163	50.9%
Sydney-North West	31	42	20	38	9	3	143	32.9%
<b>Sydney Total</b>	<b>305</b>	<b>194</b>	<b>117</b>	<b>183</b>	<b>108</b>	<b>13</b>	<b>920</b>	<b>31.6%</b>
North East NSW	12	49	53	114	41	2	271	57.2%
North West NSW	6	38	36	135	83	3	301	72.4%
South West NSW	12	33	64	129	48	2	288	61.5%
South East NSW	25	56	61	73	23	2	240	40.0%
Central Coast, Newcastle	22	44	34	76	20	3	199	48.2%
<b>Regional Total</b>	<b>77</b>	<b>220</b>	<b>248</b>	<b>527</b>	<b>215</b>	<b>12</b>	<b>1,299</b>	<b>57.1%</b>
<b>NSW</b>	<b>382</b>	<b>414</b>	<b>365</b>	<b>710</b>	<b>323</b>	<b>25</b>	<b>2,219</b>	<b>46.6%</b>

**Notes**

The list of schools with FOEI values and quarters:

- Includes:-
  - » All hospital schools (all assigned a notional FOEI of 100)
  - » Stewart House School (assigned a notional FOEI of 150)
  - » Royal Far West School (assigned a notional FOEI of 150)
- Excludes:-
  - » Palm Avenue School
  - » Open High School
  - » All Environmental Education Centres

See explanatory notes 15 and 16

**Table 4**

**NSW government schools by MCEECDYA remoteness and SA4 groupings, mid-year 2014**

SA4 Groupings	Metropolitan	Provincial	Remote	Very Remote	Total
Sydney-North	145				145
Sydney-Inner	129				129
Sydney-South	173				173
Sydney-South West	167				167
Sydney-West	163				163
Sydney-North West	143				143
<b>Sydney Total</b>	<b>920</b>				<b>920</b>
North East NSW	13	257		1	271
North West NSW	64	192	33	12	301
South West NSW		279	9		288
South East NSW	99	141			240
Central Coast, Newcastle	199				199
<b>Regional Total</b>	<b>375</b>	<b>869</b>	<b>42</b>	<b>13</b>	<b>1,299</b>
<b>NSW</b>	<b>1,295</b>	<b>869</b>	<b>42</b>	<b>13</b>	<b>2,219</b>

**Notes:**

- See explanatory note 16.



**Table 5****List of college arrangements, mid-year 2014**

College	Senior Campus	Other Campuses			
Brisbane Water Secondary College	Woy Woy Campus	Umina Campus			
Callaghan College	Jesmond Campus	Wallsend Campus	Waratah Technology Campus		
Chifley College	Senior Campus	Bidwill Campus	Dunheved Campus	Mount Druitt Campus	Shalvey Campus
Denison College of Secondary Education		Bathurst High Campus	Kelso High Campus		
Dubbo College	Senior Campus	Delroy Campus	South Campus		
Georges River College	Oatley Senior Campus	Hurstville Boys Campus	Peakhurst Campus	Penshurst Girls Campus	
Great Lakes College	Senior Campus	Forster Campus	Tuncurry Campus		
Moree Secondary College	Albert St Campus	Carol Ave Campus			
Nirimba College	Wyndham College	Quakers Hill High School	Riverstone High School	Seven Hills High School	
Northern Beaches College	Freshwater Senior Campus	Balgowlah Boys Campus	Cromer Campus	Mackellar Girls Campus	Manly Campus
Sydney Secondary College	Blackwattle Bay Campus	Balmain Campus	Leichhardt Campus		
Tuggerah Lakes College	The Entrance Campus	Berkeley Vale Campus	Tumbi Umbi Campus		

**Notes:**

- Denison College of Secondary Education does not have a senior campus.
- See explanatory note 14.

**Table 6****Secondary education schools by selective, specialist and coeducational status, mid-year 2014**

Selective Status	Specialty Name	Coeducational	Boys	Girls	Total
Fully Selective	Agricultural	3	1		4
	Comprehensive	9	4	4	17
Partially Selective	Comprehensive	17	1	1	19
	Junior College	2			2
	Language	2			2
	Senior College	1			1
<b>Total Selective</b>		<b>34</b>	<b>6</b>	<b>5</b>	<b>45</b>
Non-Selective	Comprehensive	325	12	15	352
	Creative Arts	1			1
	Intensive English	1			1
	Junior College	16	1	1	18
	Language	2		1	3
	Marine Technology	1			1
	Performing Arts	8			8
	Rural Technology	1			1
	Senior College	15			15
	Sports	7			7
	Technology	8	2	1	11
	Visual Arts	1			1
<b>Total Non-Selective</b>		<b>386</b>	<b>15</b>	<b>18</b>	<b>419</b>
<b>Total Secondary Schools</b>		<b>420</b>	<b>21</b>	<b>23</b>	<b>464</b>

**Notes:**

- Includes secondary schools and central/community schools. The Conservatorium High School is included with performing arts schools.
- See explanatory note 1.

**Table 7****Average primary class sizes by year, 1997 and 2004-2014**

Year	1997	2004	2005	2006	2007	2008	2009	2010	2011	2012	2013	2014
Kindergarten	24.1	22.1	19.7	19.3	19.2	19.2	19.3	19.2	19.2	19.3	19.4	19.3
Year 1	25.5	24.6	23.6	21.3	21.1	21.2	21.3	21.2	21.2	21.2	21.3	21.4
Year 2	26.2	25.4	25.1	24.1	22.6	22.5	22.6	22.7	22.6	22.7	22.7	22.7
Year 3	26.6	26.4	26.1	25.9	25.7	25.7	25.8	25.6	25.7	25.5	25.6	25.6
Year 4	26.8	26.6	26.4	26.4	26.2	26.1	26.2	26.2	26.1	25.9	25.9	25.9
Year 5	26.8	26.8	26.6	26.6	26.5	26.5	26.5	26.4	26.4	26.2	26.3	26.2
Year 6	26.8	26.8	26.7	26.6	26.5	26.5	26.5	26.4	26.3	26.2	26.1	26.2
<b>Kindergarten - Year 6</b>	<b>26.9</b>	<b>26.2</b>	<b>25.3</b>	<b>24.6</b>	<b>24.3</b>	<b>24.2</b>	<b>24.3</b>	<b>24.2</b>	<b>24.0</b>	<b>24.0</b>	<b>24.0</b>	<b>24.0</b>

**Notes:**

- Class size audits were not conducted in 1998, 1999, 2000 and 2001.
- The average class size for each year level is calculated from regular and multi-age classes that contain a student from that year level.
- Students attending schools for specific purposes (SSPs), students in support classes in regular schools and distance education students are excluded from average class size calculations.
- See explanatory note 12.

**Table 8**

**Enrolments (FTE) in NSW government schools, 1970, 1980, 1990, 1994-2014**

Year	Primary	Secondary	SSP	Total
1970	503,547	257,874		761,421
1980	515,769	283,352		799,121
1990	434,814	304,006	4,366	743,186
1994	445,599	306,716.6	3,798	756,113.6
1995	446,722	305,395.6	3,789	755,906.6
1996	450,465	306,823.3	3,749	761,037.3
1997	451,560	308,922.7	3,690	764,172.7
1998	452,565	309,136.7	3,673	765,374.7
1999	453,454	308,116.1	3,762	765,332.1
2000	454,363	303,681.1	3,792	761,836.1
2001	451,096	301,771.4	3,873	756,740.4
2002	447,897	302,988.0	3,915	754,800.0
2003	443,213	304,034.0	3,938	751,185.0
2004	438,677	302,849.6	3,981	745,507.6
2005	434,876	302,578.3	4,124	741,578.3
2006	432,660	303,622.0	4,133	740,415.0
2007	429,900	304,457.7	4,278	738,635.7
2008	428,331	303,055.7	4,392	735,778.7
2009	429,000	303,180.7	4,466	736,646.7
2010	430,177	307,291.2	4,673	742,141.2
2011	433,873	306,893.2	4,774	745,540.2
2012	438,681	304,632.1	4,921	748,234.1
2013	446,848	303,433.6	5,064	755,345.6
<b>2014</b>	<b>456,151</b>	<b>302,339.7</b>	<b>5,207</b>	<b>763,697.7</b>

**Notes:**

- Since 1993 some students have enrolled part-time. All enrolments are reported in full-time equivalent units (FTEs) and include full-time and part-time students.
- See explanatory notes 1, 3, 6 and 7.

**Figure 2**

**Primary and secondary enrolments (FTE) in NSW government schools, 2004-2014**

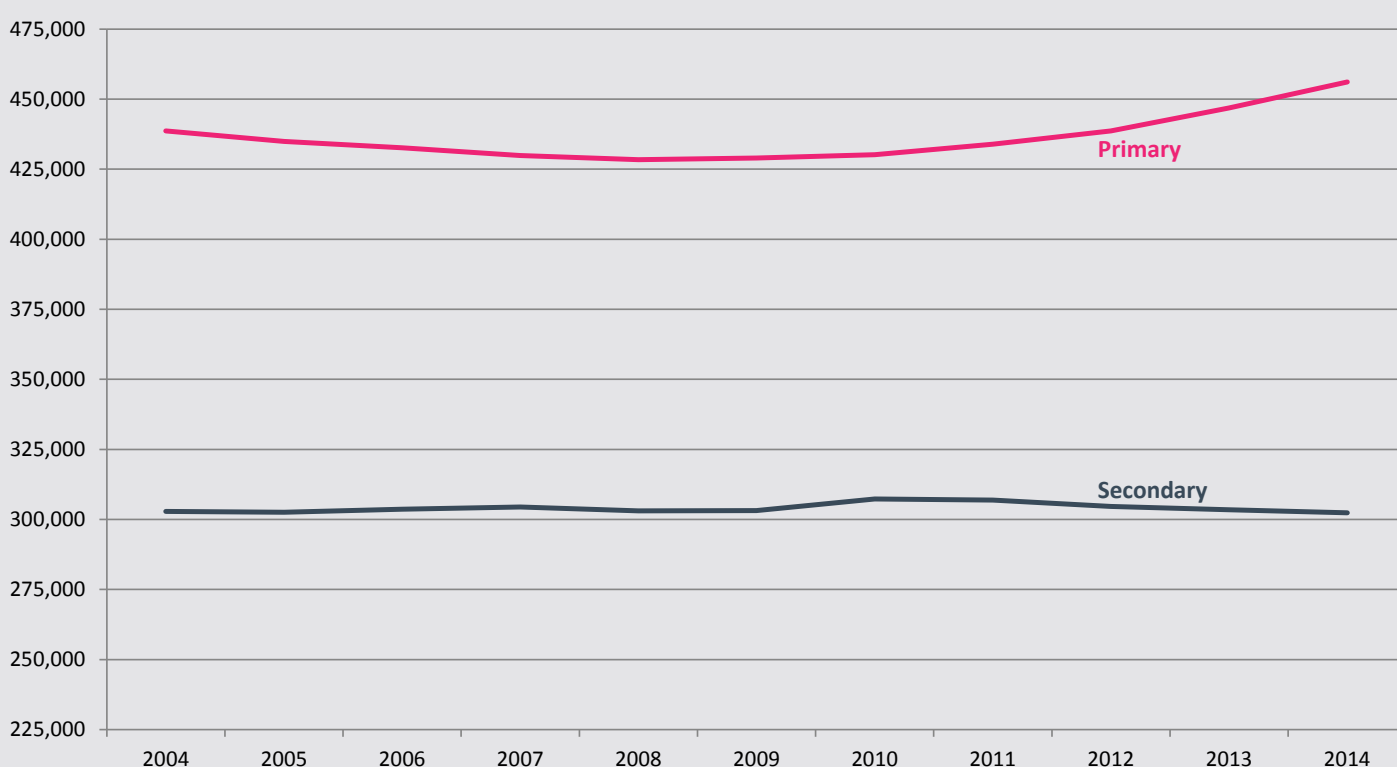


Table 9

## Age-grade distribution of students in NSW government schools, mid-year 2014, primary students by age and year of schooling (excluding support students)

Age Yrs:Mths	Kindergarten		Year 1		Year 2		Year 3		Year 4		Year 5		Year 6		Total		Primary Total		
	Boys	Girls	Boys	Girls	Boys	Girls	Boys	Girls	Boys	Girls	Boys	Girls	Boys	Girls	Boys	Girls	Boys	Girls	
Under 5	643	854	1												644	854			1,498
5-5:11	26,528	27,186	525	778											27,053	27,964			55,017
6-6:11	7,984	5,652	26,388	27,088	511	781									34,883	33,521			68,404
7-7:11	15	8	8,682	5,865	25,606	26,496	425	676							34,728	33,045			67,773
8-8:11			25	11	8,277	5,802	24,404	24,991	443	652	1				33,149	31,457			64,606
9-9:11			1		34	16	8,094	5,564	23,198	23,860	448	573	1		31,775	30,014			61,789
10-10:11					1		32	20	7,688	5,402	22,180	23,075	390	589	30,290	29,087			59,377
11-11:11							41	24	7,946	5,604	21,499	22,635	29,486	28,263	29,486	28,263			57,749
12-12:11							1		56	31	7,810	5,488	7,867	5,519	13,386	13,386			13,386
13 and over									1		55	51	55	52	107	107			107
Subtotal	35,170	33,700	35,622	33,742	34,428	33,096	32,955	31,251	31,371	29,938	30,630	29,285	29,754	28,764	229,930	219,776			449,706
<b>Total</b>	<b>68,870</b>		<b>69,364</b>		<b>67,524</b>		<b>64,206</b>		<b>61,309</b>		<b>59,915</b>		<b>58,518</b>		<b>449,706</b>				

## Notes:

- Students in distance education and Opportunity Classes (OC) are included with their appropriate grade levels. Students in support classes either in mainstream schools or schools for specific purposes (SSPs) are not included.

Table 10

## Age-grade distribution of students in NSW government schools, mid-year 2014, secondary students by age and year of schooling (excluding support students)

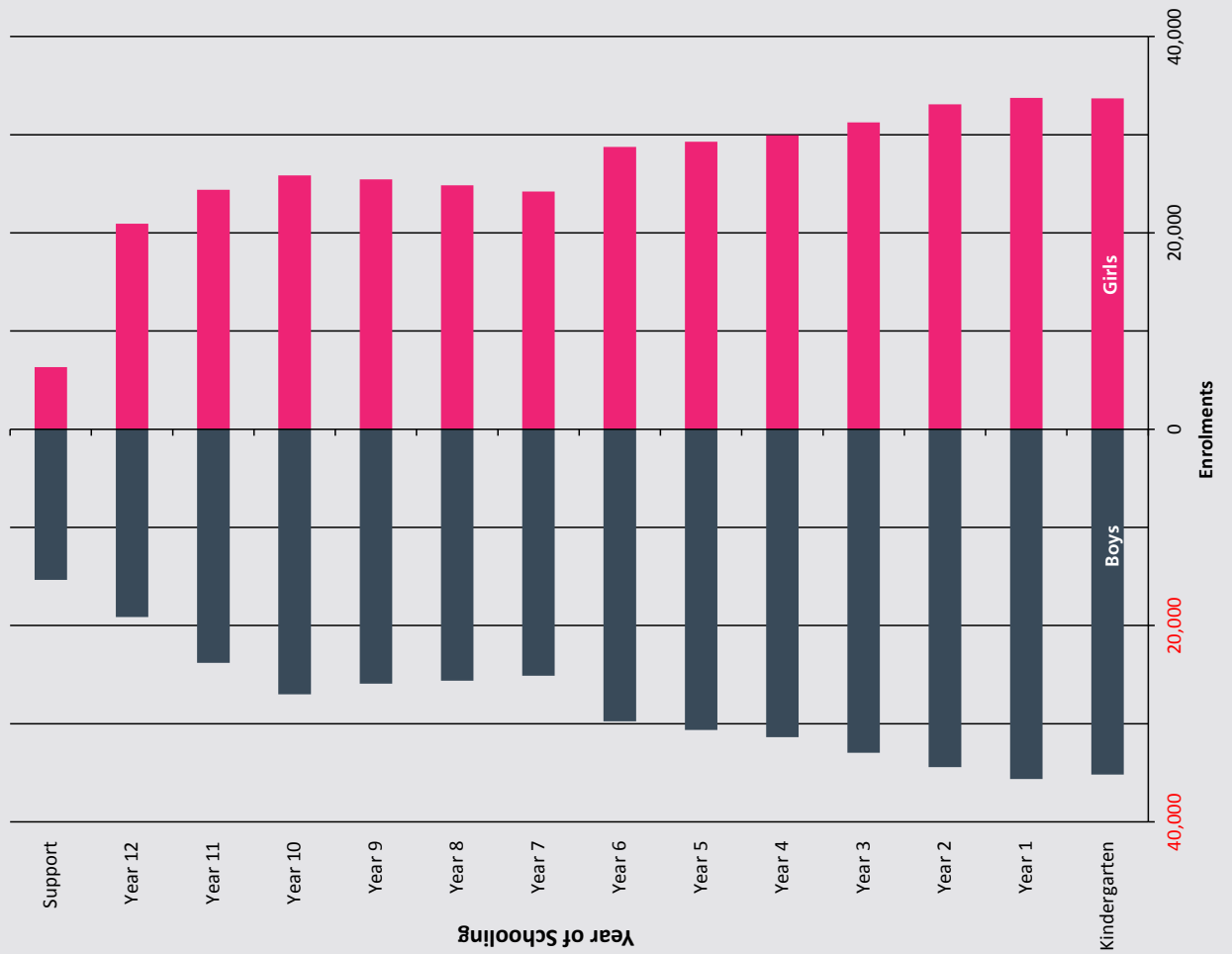
Age Yrs:Mths	Year 7		Year 8		Year 9		Year 10		Year 11		Year 12		Total		Secondary Total		
	Boys	Girls	Boys	Girls	Boys	Girls	Boys	Girls	Boys	Girls	Boys	Girls	Boys	Girls	Boys	Girls	
Under 11	2												2				2
11-11:11	361	479	1										361	480			841
12-12:11	17,881	18,981	383	497	3	1							18,267	19,479			37,746
13-13:11	6,779	4,724	18,212	19,285	391	552	1	2					25,383	24,563			49,946
14-14:11	94	38	6,915	5,007	18,388	19,488	433	583	3	1			25,833	25,117			50,950
15-15:11	2		88	49	7,011	5,306	18,487	19,476	410	600	4	3	26,002	25,434			51,436
16-16:11	1		5	1	135	99	288	222	386	328	4,800	13,759	20,402	21,451			49,411
17-17:11					2	2	51	42	86	73	306	281	5,237	4,413			9,650
18-18:11							23	22	86	73	306	281	415	376			791
19-19:11							12	8	23	27	62	48	97	83			180
20-20:11							57	60	71	127	52	63	180	250			430
21 and over	25,120	24,222	25,603	24,840	25,928	25,451	27,008	25,861	23,965	24,643	19,362	21,233	146,986	146,250			293,236
Subtotal	49,342		50,443		51,379		52,869		48,608		40,595		293,236				
<b>Total</b>	<b>49,342</b>		<b>50,443</b>		<b>51,379</b>		<b>52,869</b>		<b>48,608</b>		<b>40,595</b>		<b>293,236</b>				

## Notes:

- Students in distance education are included with their appropriate grade levels. Students in support classes either in mainstream schools or schools for specific purposes (SSPs) are not included.

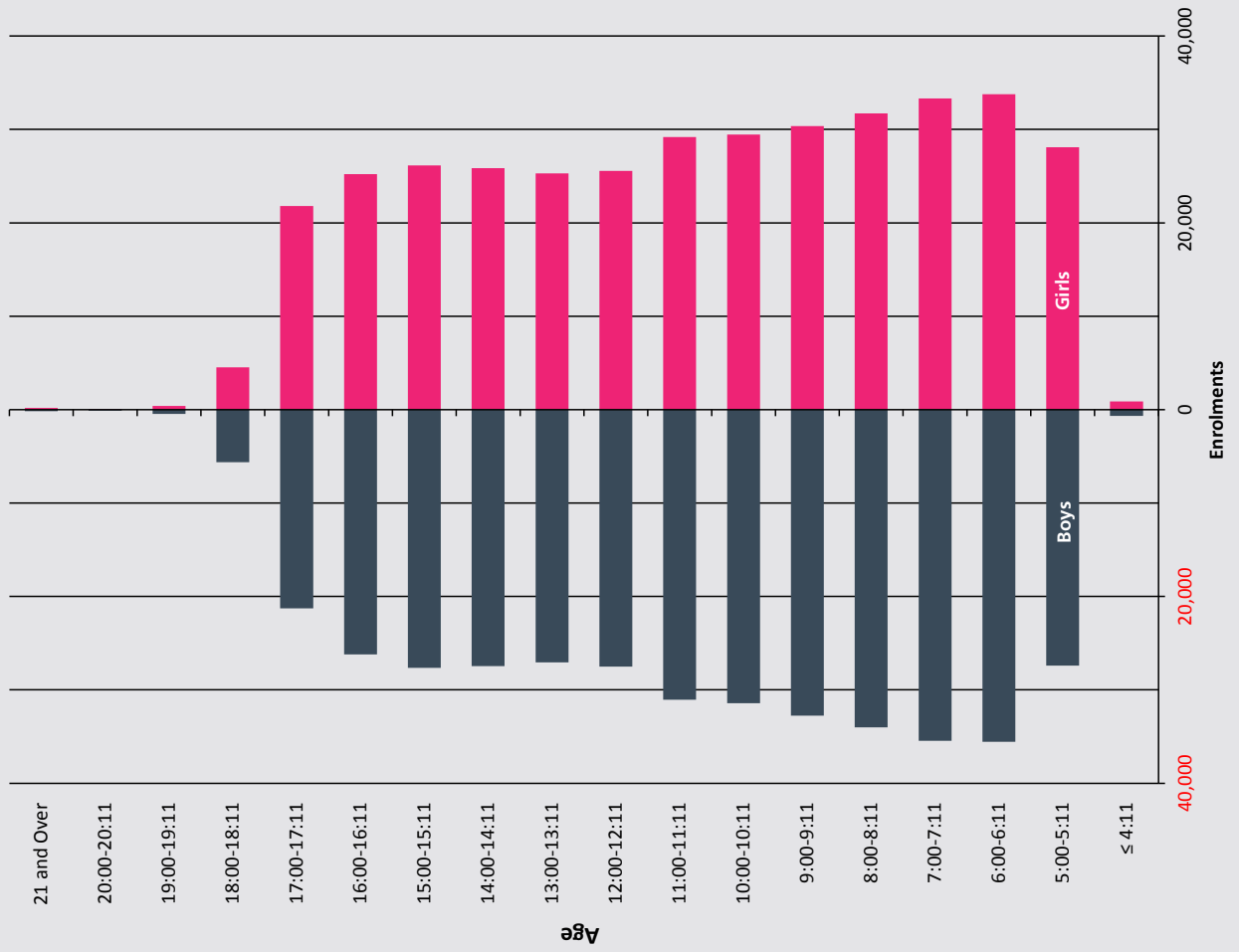
**Figure 3**

Enrolments (FTE) in NSW government schools by year of schooling and gender, mid-year 2014



**Figure 4**

Enrolments (FTE) in NSW government schools by age and gender, mid-year 2014



**Table 11**

**Age-grade distribution of students in NSW government schools, mid-year 2014**  
part-time secondary students by age and year of schooling

Age Yrs:Mths	Year 11		Year 12		Total		Total Part-time
	Boys	Girls	Boys	Girls	Boys	Girls	
Under 16	4	7			4	7	11
16-16:11	187	248	16	15	203	263	466
17-17:11	103	111	405	477	508	588	1,096
18-18:11	20	25	226	240	246	265	511
19-19:11	8	4	48	52	56	56	112
20-20:11	2	1	3	9	5	10	15
21 and Over	49	90	7	26	56	116	172
Subtotal	373	486	705	819	1,078	1,305	2,383
<b>Total</b>	<b>859</b>		<b>1,524</b>		<b>2,383</b>		

**Full-time equivalent**

Subtotal	247.3	211.9	532.3	462.2	779.6	674.1	1,453.7
<b>Total</b>	<b>459.2</b>		<b>994.5</b>		<b>1,453.7</b>		

**Notes:**

- See explanatory notes 6 and 7.

**Table 12**

**Enrolments in support classes and schools for specific purposes (SSPs) by category, mid-year 2014**

Category	Primary Schools	Secondary Schools	Schools for Specific Purposes	Total
AU	613	563	27	1,203
BD	22	77	482	581
DB			3	3
ED	321	483	919	1,723
H	128	117	5	250
IE		2,218		2,218
IM	1,762	3,358	15	5,135
IO	949	984		1,933
IO/AU	280	44	13	337
IO/IS	704	793	2,835	4,332
IS	31		136	167
JJ			280	280
MC	1,555	1,162	437	3,154
P	67	92	13	172
TUT	13	142	12	167
V			30	30
<b>Total</b>	<b>6,445</b>	<b>10,033</b>	<b>5,207</b>	<b>21,685</b>

**Key:**

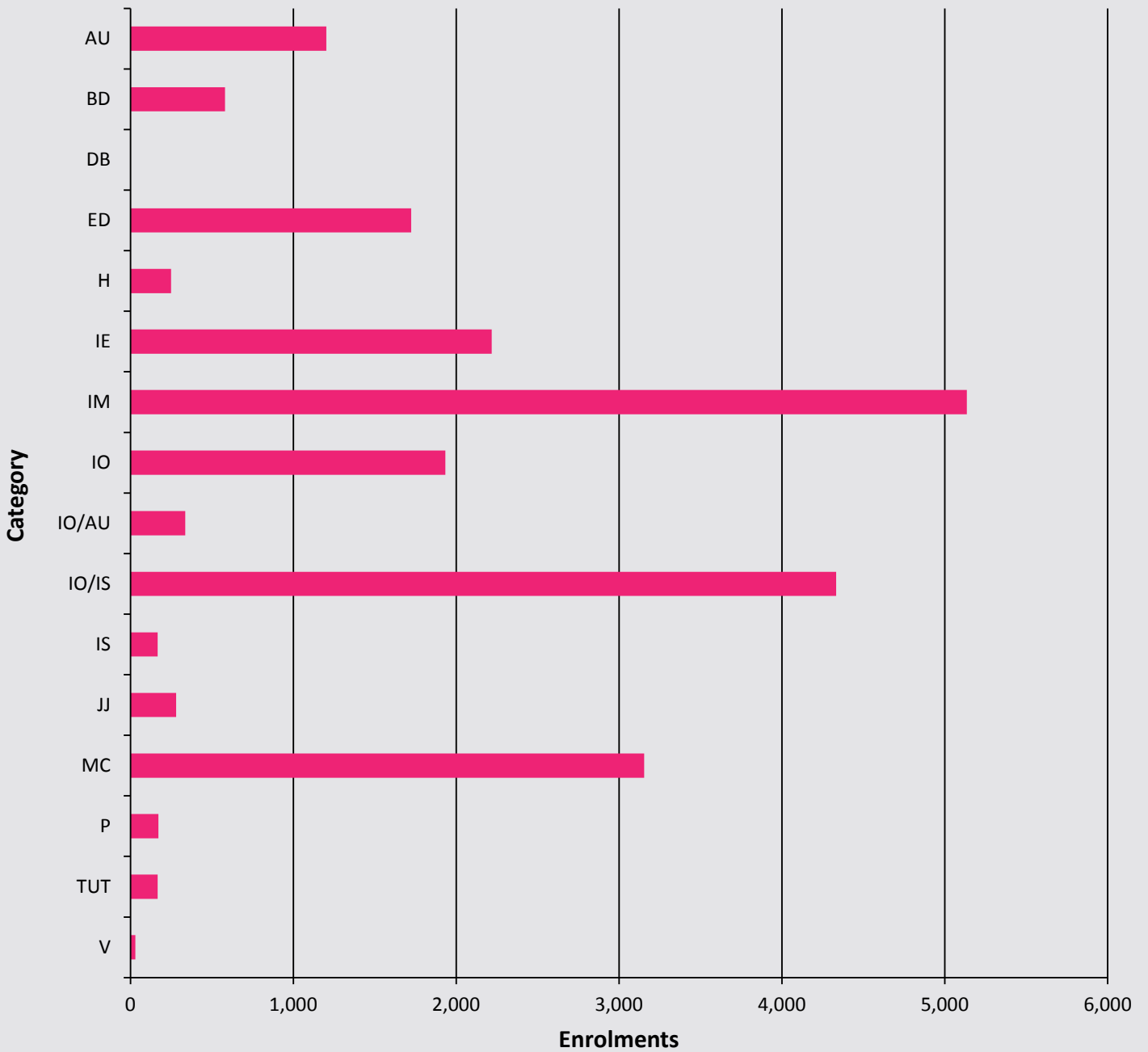
AU	Autism	IM	Mild intellectual disability	MC	Multicategorical
BD	Behaviour disorder	IO	Moderate intellectual disability	P	Physical disability
DB	Visual and hearing disability	IO/AU	Both autism and moderate intellectual disability	TUT	Tutorial
ED	Emotional disturbance	IO/IS	Moderate or severe intellectual disability	V	Visual disability
H	Hearing disability	IS	Severe intellectual disability		
IE	Intensive English	JJ	Juvenile Justice		

**Notes:**

- Students in SSPs, except those in juvenile justice schools, are reported by the category of their primary disability, not by the type of SSP.
- See explanatory notes 3 and 4.

Figure 5

Enrolments in support classes in ordinary schools and SSPs by category, mid-year 2014



**Key:**

AU	Autism	IM	Mild intellectual disability	MC	Multicategorical
BD	Behaviour disorder	IO	Moderate intellectual disability	P	Physical disability
DB	Visual and hearing disability	IO/AU	Both autism and moderate intellectual disability	TUT	Tutorial
ED	Emotional disturbance	IO/IS	Moderate or severe intellectual disability	V	Visual disability
H	Hearing disability	IS	Severe intellectual disability		
IE	Intensive English	JJ	Juvenile Justice		

Table 13

Age-grade distribution of students in NSW government schools, mid-year 2014  
students in schools for specific purposes by age and category

Age Yrs:Mths	AU		BD		DB		ED		H		IM		IO/AU		IO/IS		IS		JJ		MC		P		TUT		V		Total		
	B	G	B	G	B	G	B	G	B	G	B	G	B	G	B	G	B	G	B	G	B	G	B	G	B	G	B	G	B	G	
3-3:11															1														1	0	
4-4:11															18	11	1						6	3	1			1	2	27	16
5-5:11	2				5	2							1		84	36	2	1					21	11	1		3		119	50	
6-6:11	6				12	1									119	48	4	4					32	17			2	2	175	72	
7-7:11	2				19	3									126	61	4	7					39	17	1				190	89	
8-8:11	1		3		31	4									117	46	11	4					22	4			1		186	58	
9-9:11	3	1	3		49	3						2	1		134	67	3	3					23	6	2		2	1	219	84	
10-10:11	5		12		46		1				1				169	59	9	1					25	2	2	1	1	2	271	66	
11-11:11	6		36	8	49	6	1				1				146	64		6					26	6			2		266	90	
12-12:11	1		37		60	8					1				159	65	5	6					23	8					287	88	
13-13:11			71	17	74	20					1			4	183	85	5	6					26	8	2		2		374	139	
14-14:11			89	36	76	20					2	1	2		151	84	6	3					29	8	5	1	3	1	385	157	
15-15:11			90	26	89	28					2	3	1		147	73	8	9					22	3	2	1	2		387	147	
16-16:11			35	10	1	121	61				3				154	92	9	4					17	11	2	1	2		404	187	
17-17:11			5	3	1	70	28				1			1	139	70	2	8					7	8			1	1	307	123	
18-18:11					19	8	1								83	38	3	2					6	1					159	51	
19 and over					5	2									2	4													27	6	
Subtotal	26	1	381	101	3	725	194	4	1	11	4	11	2	1,932	903	72	64	262	18	324	113	8	5	10	2	18	12	3,784	1,423		
<b>Total</b>	<b>27</b>		<b>482</b>		<b>3</b>	<b>919</b>		<b>5</b>		<b>15</b>		<b>13</b>		<b>2,835</b>		<b>136</b>		<b>280</b>		<b>437</b>		<b>13</b>		<b>12</b>		<b>30</b>		<b>5,207</b>			

**Key:**

AU	Autism	IM	Mild intellectual disability	MC	Multicategorical
BD	Behaviour disorder	IO	Moderate intellectual disability	P	Physical disability
DB	Visual and hearing disability	IO/AU	Both autism and moderate intellectual disability	TUT	Tutorial
ED	Emotional disturbance	IO/IS	Moderate or severe intellectual disability	V	Visual disability
H	Hearing disability	IS	Severe intellectual disability		
IE	Intensive English	JJ	Juvenile Justice		

**Notes:**

- Students in SSPs, except those in juvenile justice schools, are reported by the category of their primary disability, not by the type of SSP.
- See explanatory note 3.



Table 14

## Age distribution of students in NSW government preschools and early intervention programs, mid-year 2014

## Preschools

Age Yrs:Mths	All Students	Aboriginal and Torres Strait Islander Students
3 and Under	164	41
4:00 - 4:11	3,489	385
5:00 - 5:11	712	102
6 and Over		
<b>Total</b>	<b>4,365</b>	<b>528</b>

## Early Intervention

Age Yrs:Mths	All Students	Aboriginal and Torres Strait Islander Students
3 and Under	52	6
4:00 - 4:11	328	40
5:00 - 5:11	340	43
6 and Over		
<b>Total</b>	<b>720</b>	<b>89</b>

## Notes:

- Figures reported above are children enrolled in a preschool or an Early Intervention program that is run by a NSW government school. These government preschool classes provide full-time or part-time schooling at pre-primary level.
- In NSW, most children receiving a preschool education are enrolled at a government funded community preschool or in a Long Day Care centre which offers a preschool program.

Table 15

## Enrolments (FTE) in distance education by year of schooling, mid-year 2014

Primary	Boys	Girls	Total
Kindergarten	39	43	82
Year 1	45	56	101
Year 2	55	59	114
Year 3	55	50	105
Year 4	56	55	111
Year 5	62	71	133
Year 6	49	37	86
Primary Support	5	6	11
<b>Total Primary</b>	<b>366</b>	<b>377</b>	<b>743</b>
Secondary	Boys	Girls	Total
Year 7	67	33	100
Year 8	96	84	180
Year 9	179	204	383
Year 10	316	399	715
Year 11	156.3	199.8	356.1
Year 12	71.2	113.6	184.8
Secondary Support	19	13	32
<b>Total Secondary</b>	<b>904.5</b>	<b>1,046.4</b>	<b>1,950.9</b>
<b>Total All Students</b>	<b>1,270.5</b>	<b>1,423.4</b>	<b>2,693.9</b>

## Notes:

- All enrolments are reported in full-time equivalent units (FTE), and include full-time and part-time students whose main school is the distance education centre.
- See explanatory note 5.

Table 16

Enrolments (FTE) of Aboriginal students by SA4 groupings and grade groups in NSW government schools, mid-year 2014

SA4 Groupings	K-2	Yr3-6	Primary Total	Yr7-10	Yr11-12	Secondary Total	SA4 Groups Total	% Aboriginal
Sydney-North	91	109	200	115	28.8	143.8	355.8	0.4%
Sydney-Inner	340	427	767	380	138.8	518.8	1,314.8	2.5%
Sydney-South	276	319	595	292	108.8	400.8	1,015.8	1.3%
Sydney-South West	928	1,131	2,059	992	288.4	1,280.4	3,424.4	4.1%
Sydney-West	887	1,059	1,946	810	210.4	1,020.4	3,076.4	3.9%
Sydney-North West	717	932	1,649	832	231.2	1,063.2	2,748.2	4.5%
<b>Sydney Total</b>	<b>3,239</b>	<b>3,977</b>	<b>7,216</b>	<b>3,421</b>	<b>1,006.4</b>	<b>4,427.4</b>	<b>11,935.4</b>	<b>2.8%</b>
North East NSW	2,168	2,630	4,798	2,602	719.9	3,321.9	8,154.9	12.9%
North West NSW	3,737	4,351	8,088	4,060	1,011.9	5,071.9	13,247.9	20.0%
South West NSW	1,814	2,126	3,940	2,028	499.6	2,527.6	6,548.6	12.2%
South East NSW	1,481	1,889	3,370	1,772	452.9	2,224.9	5,633.9	8.0%
Central Coast, Newcastle	1,568	1,965	3,533	1,885	561.9	2,446.9	6,091.9	7.8%
<b>Regional Total</b>	<b>10,768</b>	<b>12,961</b>	<b>23,729</b>	<b>12,347</b>	<b>3,246.2</b>	<b>15,593.2</b>	<b>39,677.2</b>	<b>11.9%</b>
<b>State Total</b>	<b>14,007</b>	<b>16,938</b>	<b>30,945</b>	<b>15,768</b>	<b>4,252.6</b>	<b>20,020.6</b>	<b>51,612.6</b>	<b>6.8%</b>
Aboriginal total as a percentage of total enrolments in each grade group	6.8%	6.8%	6.8%	7.4%	4.8%	6.6%	6.8%	

**Notes:**

- Students in Distance Education and Opportunity Classes (OC) are included with their appropriate grade levels.
- Primary support students are included in Year 3 to 6. Secondary support students are included in Year 7 to 10.
- There were 647 Aboriginal students enrolled in SSPs, representing 12.4% of total SSP enrolments. This figure is not broken down into SA4 groupings but is included in SA4 Groups Total.
- See explanatory notes 8 and 16.

**Table 17****Enrolment of students of language background other than English (LBOTE) in NSW government schools,  
March 2014 by SA4 groupings and grade groups**

SA4 Groupings	K-2	Yr3-6	Primary Total	Yr7-10	Yr11-12	Secondary Total	SA4 Groups Total	% LBOTE
Sydney-North	8,531	9,452	17,983	8,060	4,707	12,767	31,345	38.8%
Sydney-Inner	6,981	7,878	14,859	8,367	4,840	13,207	28,809	53.9%
Sydney-South	11,862	14,513	26,375	11,232	5,899	17,131	44,864	59.1%
Sydney-South West	11,627	14,968	26,595	13,215	6,868	20,083	48,441	58.4%
Sydney-West	14,622	16,106	30,728	11,047	5,644	16,691	49,114	62.7%
Sydney-North West	3,772	4,798	8,570	4,706	2,905	7,611	16,471	26.9%
<b>Sydney Total</b>	<b>57,395</b>	<b>67,715</b>	<b>125,110</b>	<b>56,627</b>	<b>30,863</b>	<b>87,490</b>	<b>219,044</b>	<b>50.7%</b>
North East NSW	897	1,041	1,938	955	433	1,388	3,370	5.2%
North West NSW	737	851	1,588	663	268	931	2,552	3.8%
South West NSW	960	1,064	2,024	858	380	1,238	3,311	6.1%
South East NSW	1,997	2,565	4,562	2,147	1,089	3,236	8,053	11.3%
Central Coast, Newcastle	1,660	1,952	3,612	1,934	841	2,775	6,520	8.2%
<b>Regional Total</b>	<b>6,251</b>	<b>7,473</b>	<b>13,724</b>	<b>6,557</b>	<b>3,011</b>	<b>9,568</b>	<b>23,806</b>	<b>7.1%</b>
<b>State Total</b>	<b>63,646</b>	<b>75,188</b>	<b>138,834</b>	<b>63,184</b>	<b>33,874</b>	<b>97,058</b>	<b>242,850</b>	<b>31.6%</b>

**Notes:**

- LBOTE enrolments for 2014 are compared to enrolments (headcount) in March 2014.
- LBOTE Bulletins published in years prior to 2013 have compared LBOTE enrolments to February school enrolments of the same year. The change to March data means that a more accurate measure of total enrolments is used as the denominator because they are extracted from the Enrolment Registration Number (ERN) system at the same point in time as the LBOTE collection.
- There were 1,384 LBOTE students enrolled in SSPs, representing 32.2% of total SSP enrolments. This figure is not broken down into SA4 groupings but is included in SA4 Groups Total.
- Primary support students are included in Year 3 to 6. Secondary support students are included in Year 7 to 10.
- For more detailed analysis of students of language background other than English, please refer to **CESE Bulletin Issue 8 - Language Diversity in NSW, 2014**.
- See explanatory notes 10 and 16.

Table 18

## Enrolments (FTE) in NSW government schools by FOEI quarters and SA4 groupings, April 2014

SA4 Groupings	Quarter 1	Quarter 2	Quarter 3	Quarter 4	Total	Quarter 1 (%)
Sydney-North	3,011	8,449	19,137	50,064	80,661	3.7%
Sydney-Inner	5,058	7,622	12,543	28,431	53,654	9.4%
Sydney-South	14,805	19,045	21,140	21,119	76,109	19.5%
Sydney-South West	30,704	25,941	17,359	9,860	83,864	36.6%
Sydney-West	24,038	19,177	17,367	18,931	79,513	30.2%
Sydney-North West	11,785	15,946	15,329	18,403	61,463	19.2%
<b>Sydney Total</b>	<b>89,401</b>	<b>96,180</b>	<b>102,875</b>	<b>146,808</b>	<b>435,264</b>	<b>20.5%</b>
North East NSW	22,150	19,491	13,264	9,285	64,190	34.5%
North West NSW	27,130	21,168	12,012	7,576	67,886	40.0%
South West NSW	19,135	16,863	10,905	7,554	54,457	35.1%
South East NSW	20,088	21,538	16,180	13,488	71,294	28.2%
Central Coast, Newcastle	21,441	24,187	18,204	15,731	79,563	26.9%
<b>Regional Total</b>	<b>109,944</b>	<b>103,247</b>	<b>70,565</b>	<b>53,634</b>	<b>337,390</b>	<b>32.6%</b>
<b>NSW</b>	<b>199,345</b>	<b>199,427</b>	<b>173,440</b>	<b>200,442</b>	<b>772,654</b>	<b>25.8%</b>

## Notes:

- Enrolments are from system extracts in April and are not mid-year census enrolments which are extracted in August.
- See explanatory notes 15 and 16.

**Table 19**

**Primary students in NSW government schools studying a language other than English by year of schooling and language, May 2014**

Language Name	Kinder	Year 1	Year 2	Year 3	Year 4	Year 5	Year 6	Support	Total
Chinese (Mandarin)	2,969	3,568	3,274	2,820	2,625	2,274	2,280	10	19,820
Italian	1,874	2,131	2,203	2,373	2,056	1,735	1,507	60	13,939
Arabic	1,515	1,533	1,330	1,280	1,113	1,062	957	68	8,858
French	845	981	851	1,044	993	790	904	15	6,423
Vietnamese	611	672	657	714	804	679	671	33	4,841
Indonesian	497	542	792	695	715	589	711		4,541
Japanese	324	518	536	674	657	700	792		4,201
Greek	542	637	581	478	421	424	379		3,462
Korean	493	538	402	258	321	345	385		2,742
Spanish	223	189	185	142	145	156	136	35	1,211
Gumbaynggir	145	207	212	147	141	119	98	15	1,084
Wiradjuri	102	149	149	150	129	114	103		896
German	110	101	100	85	88	56	180		720
Assyrian	113	58	94	72	75	98	96		606
Macedonian	78	61	97	71	62	71	89		529
Bundjalung	95	61	71	81	59	70	56		493
Khmer	50	90	54	84	70	64	75		487
Turkish	79	48	66	66	54	66	51		430
Hebrew	125	63	61	47	55	38	26		415
Greek (Modern)		45	41	48	37	97	112		380
Hindi	36	41	75	62	53	18	25		310
Dhanggati/Dunghutti/ Thunghutti	45	54	41	39	38	38	37		292
Dari	79	47	47	38	27	30	21		289
Tamil	21	23	56	66	54	38	25		283
Samoan	75	26	39	36	32	35	31		274
Bengali	57	45	31	35	36	23	37		264
Portuguese	8	15	32	26	19	106	44		250
Dhurga	71	76	86						233
Auslan	39	21	31	32	28	32	25	24	232
Punjabi	52	39	45	50	36				222
Gamilaraay	37	50	41	39	19	23	11		220
Dharug		31	26	27	23	39	46		192
Tongan	27	31	32	33	16	20	29		188
Ngemba/Ngiyampaa		41	36	29	24	26	23		179
Serbian	2	17	31	22	30	25	28		155
Urdu	30	22	25	25	14	17	12		145
Dharawal	25	19	17	18	25	17	16		137
Greek (Classical)		30	26	28	23				107
Wadi Wadi	18	8	16	4	8	8	7	20	89
Paakantji/Barkindji	11	12	9	10	14	10	20		86
Russian	13	13	19	13	12	10	6		86
Fijian	5	6	16	8	5	10	12		62
Maori (Cook Island)	5	6	16	8	5	10	12		62
Maori (New Zealand)	5	6	16	8	5	6	12		58
Tswana	6	9	8	6	8	12	6		55
Nepali	9	5	6	6	10	9	9		54
Gathang			5	6	14	10	11		46
Farsi	5	8	5	7	5	8	5		43
Maori	3	2	6	8	8	8	6		41
Lao	5	3	5	4	4	2	5		28
<b>Total</b>	<b>11,479</b>	<b>12,898</b>	<b>12,600</b>	<b>12,022</b>	<b>11,215</b>	<b>10,137</b>	<b>10,129</b>	<b>280</b>	<b>80,760</b>

**Notes:**

- The table includes data from the K-6 Community Languages Program (CLP) and the K-6 Languages Program (non-CLP) collections.
- Students may study more than one language.
- Students in Distance Education and Opportunity Classes (OC) are included with their appropriate grade levels.

Table 20

## Language participation Year 7-9 by gender and year of schooling, August 2014

Language Name	Year 7			Year 8			Year 9			All Students		
	Boys	Girls	Total	Boys	Girls	Total	Boys	Girls	Total	Boys	Girls	Total
Japanese	5,721	5,273	10,994	4,637	4,761	9,398	887	1,255	2,142	11,245	11,289	22,534
French	3,523	3,385	6,908	3,268	4,008	7,276	372	1,072	1,444	7,163	8,465	15,628
Italian	1,198	1,299	2,497	1,380	1,543	2,923	141	352	493	2,719	3,194	5,913
Chinese (Mandarin)	1,267	1,148	2,415	1,131	897	2,028	258	287	545	2,656	2,332	4,988
Indonesian	1,151	1,019	2,170	902	929	1,831	48	89	137	2,101	2,037	4,138
German	766	481	1,247	1,306	1,014	2,320	191	234	425	2,263	1,729	3,992
Spanish	630	616	1,246	577	652	1,229	36	89	125	1,243	1,357	2,600
Korean	239	224	463	194	72	266	34	53	87	467	349	816
Arabic	185	142	327	141	143	284	37	84	121	363	369	732
Latin	138	75	213	182	195	377	54	78	132	374	348	722
Greek (Modern)	59	131	190	263	196	459	22	48	70	344	375	719
Vietnamese	34	49	83	80	95	175	35	31	66	149	175	324
Wiradjuri	42	47	89	55	52	107				97	99	196
Gumbaynggir	94	86	180							94	86	180
Chinese (Cantonese)	34	36	70	58	30	88				92	66	158
Dhurga	85	72	157							85	72	157
Gamilaraay	49	58	107	12	13	25				61	71	132
Turkish	6	8	14	10	41	51	16	16	32	32	65	97
Paakantji / Barkindji	5	9	14	14	20	34	4	3	7	23	32	55
Hebrew	10	14	24	10	1	11	6	4	10	26	19	45
Greek (Classical)							3	7	10	3	7	10
Wailwan	1	5	6	3	1	4				4	6	10
Auslan	1	2	3	3	1	4				4	3	7
Russian							4	1	5	4	1	5
Yuwaalaraay	2		2		2	2		1	1	2	3	5
<b>Total</b>	<b>15,240</b>	<b>14,179</b>	<b>29,419</b>	<b>14,226</b>	<b>14,666</b>	<b>28,892</b>	<b>2,148</b>	<b>3,704</b>	<b>5,852</b>	<b>31,614</b>	<b>32,549</b>	<b>64,163</b>

## Notes:

- The table includes students studying a language through the Saturday School of Community Languages.
- The table includes only students learning a language on average for more than 1 hour per week for 35 or more weeks a year.
- There were an additional 21,551 students who were learning a language for a shorter duration.

Table 21

## Course enrolments in Year 10 subjects in NSW government schools, 2014

BOS Course ID	Course name	Hours	Boys	Girls	Total
300	English	200	26,040	24,861	50,901
301	English (Life Skills)		1,287	542	1,829
323	Mathematics	200	26,036	24,917	50,953
324	Mathematics (Life Skills)		1,279	542	1,821
350	Science	200	26,042	24,863	50,905
351	Science (Life Skills)		1,276	536	1,812
410	Aboriginal Studies	200	83	81	164
411	Aboriginal Studies	100	48	44	92
412	Aboriginal Studies (Life Skills)		13	3	16
430	Commerce	200	4,228	4,035	8,263
431	Commerce	100	803	908	1,711
432	Commerce (Life Skills)		10	6	16
440	Geography	200	169	85	254
441	Geography	100	71	217	288
450	History	200	1,503	1,409	2,912
451	History	100	574	797	1,371
452	History Elective (Life Skills)		12	5	17
500	Work Education	200	408	403	811
501	Work Education	100	706	589	1,295
502	Work Education (Life Skills)		398	132	530
792	Aboriginal Languages (Life Skills)		14	11	25
800	Arabic	200	32	37	69
801	Arabic	100	1	8	9
810	Chinese	200	225	246	471
811	Chinese	100	35	55	90
812	Chinese (Life Skills)		5	3	8
820	Classical Greek	200	12	4	16
870	French	200	293	901	1,194
871	French	100	56	138	194
872	French (Life Skills)		2		2
880	German	200	172	204	376
881	German	100	18	36	54
890	Hebrew	200	1		1
910	Indonesian	200	47	71	118
911	Indonesian	100	5	15	20
912	Indonesian (Life Skills)		3	1	4
920	Italian	200	114	202	316
921.0	Italian	100	47.0	100.0	147.0
922	Italian (Life Skills)		13	8	21
930	Japanese	200	649	1,017	1,666
931	Japanese	100	124	198	322
932	Japanese (Life Skills)		5	5	10
940	Korean	200	55	61	116
941	Korean	100	6	17	23
950	Latin	200	70	68	138
990	Modern Greek	200	9	23	32
991	Modern Greek	100	6	14	20
1010	Russian	200	6	3	9
1040	Spanish	200	22	32	54
1041	Spanish	100	5	21	26
1042	Spanish (Life Skills)		11	6	17
1050	Turkish	200	9	30	39
1051	Turkish	100	1	4	5
1071	Vietnamese	200	29	38	67
1072	Vietnamese	100	5	9	14

Table 21

## Course enrolments in Year 10 subjects in NSW government schools, 2014 (continued)

BOS Course ID	Course name	Hours	Boys	Girls	Total
1605	Agricultural Technology	200	2,262	1,791	4,053
1606	Agricultural Technology	100	672	474	1,146
1607	Agricultural Technology (Life Skills)		85	37	122
1625	Food Technology	200	3,964	7,672	11,636
1626	Food Technology	100	1,156	1,721	2,877
1627	Food Technology (Life Skills)		471	225	696
1650	Design and Technology	200	491	633	1,124
1651	Design and Technology	100	287	285	572
1652	Design & Technology (Life Skills)		67	39	106
1700	Graphics Technology	200	1,110	245	1,355
1701	Graphics Technology	100	394	139	533
1702	Graphics Technology (Life Skills)		9		9
1800	Industrial Technology (Automotive)	200	330	13	343
1801	Industrial Technology (Automotive)	100	150	15	165
1802	Industrial Technology (Building and Construction)	200	457	12	469
1803	Industrial Technology (Building and Construction)	100	185	27	212
1804	Industrial Technology (Ceramics)	200	2	34	36
1805	Industrial Technology (Ceramics)	100	18	16	34
1806	Industrial Technology (Electronics)	200	1,180	63	1,243
1807	Industrial Technology (Electronics)	100	322	28	350
1808	Industrial Technology (Engineering)	200	2,313	125	2,438
1809	Industrial Technology (Engineering)	100	475	39	514
1810	Industrial Technology (Farm Maintenance)	200	36	1	37
1811	Industrial Technology (Farm Maintenance)	100	2	3	5
1812	Industrial Technology (Leather)	200	2	1	3
1813	Industrial Technology (Leather)	100	3		3
1814	Industrial Technology (Metal)	200	2,838	162	3,000
1815	Industrial Technology (Metal)	100	915	115	1,030
1816	Industrial Technology (Multimedia/Photography)	200	609	255	864
1817	Industrial Technology (Multimedia/Photography)	100	247	163	410
1820	Industrial Technology (Timber)	200	6,530	940	7,470
1821	Industrial Technology (Timber)	100	1,234	330	1,564
1822	Industrial Technology (Life Skills)		215	44	259
1830	Information & Software Technology	200	4,591	1,254	5,845
1831	Information & Software Technology	100	917	355	1,272
1832	Information & Software Technology (Life Skills)		174	57	231
1900	Textiles Technology	200	27	1,871	1,898
1901	Textiles Technology	100	29	698	727
1902	Textiles Technology (Life Skills)		16	27	43
2000	Dance	200	61	1,923	1,984
2001	Dance	100	35	389	424
2002	Dance (Life Skills)		23	30	53
2010	Drama	200	1,402	3,340	4,742
2011	Drama	100	366	803	1,169
2012	Drama (Life Skills)		27	23	50
2050	Music	200	3,356	3,553	6,909
2051	Music	100	706	728	1,434
2052	Music (Life Skills)		279	110	389
2060	Visual Arts	200	2,634	6,223	8,857
2061	Visual Arts	100	694	1,255	1,949
2062	Visual Arts (Life Skills)		440	201	641
2070	Visual Design	200	246	528	774
2071	Visual Design	100	216	366	582
2072	Visual Design (Life Skills)		15	8	23



**Table 21****Course enrolments in Year 10 subjects in NSW government schools, 2014 (continued)**

BOS Course ID	Course name	Hours	Boys	Girls	Total
2080	Photographic and Digital Media	200	1,329	3,163	4,492
2081	Photographic and Digital Media	100	586	1,198	1,784
2082	Photographic and Digital Media (Life Skills)		18	23	41
2420	Personal Development, Health and P.E.	200	18,947	18,311	37,258
2421	Personal Development, Health and P.E.	100	6,236	5,754	11,990
2422	Personal Development, Health and P.E. (Life Skills)		1,202	503	1,705

**Number of students meeting the curriculum requirements for the Record of School Achievement (RSA), Year 10 students in NSW government schools, 2014**

In 2012, the School Certificate was discontinued and replaced by the Record of School Achievement (RSA). The RSA is a record of a student's achievements from Year 10 until they leave school.

The table shows the number of Year 10 students that completed the mandatory courses for an RSA. Some courses may have been completed when the students were in Year 7, 8 or 9. For example, the Languages course would have been completed by students when they were in Year 7 or 8.

	Boys	Girls	Total
Number of students	26,538	24,868	51,406

**Source:** Department of Education, data derived from Board of Studies data.

**Notes:**

- The table includes students studying a language through the Saturday School of Community Languages.
- Hours equal to the number of hours studied over Years 9 and 10.
- From 2012, eligible students who leave school before receiving their Higher School Certificate (HSC) will receive the NSW Record of School Achievement (RSA).
- Students need to complete the mandatory requirements for Stage 5 (Year 10) to be eligible for a RSA. They must have:
  - » attended a government school, an accredited non-government school or a recognised school outside NSW;
  - » undertaken and completed courses of study that satisfy the Board's curriculum and assessment requirements for the Record of School Achievement;
  - » complied with any other regulations or requirements (such as attendance) imposed by the Minister or the Board; and
  - » completed Year 10.
- Students intending to leave school before completing their HSC can take optional online literacy and numeracy tests. They are designed to provide an overview of a student's level of achievement in these areas.
- Students are required to complete the following mandatory curriculum for the RSA:
  - » English
  - » Mathematics
  - » Science
  - » Human Society and its Environments
  - » Languages other than English
  - » Technological and Applied Studies
  - » Creative Arts
  - » Personal Development, Health and Physical Education

Table 22

## Course enrolments in Year 11 and Year 12 subjects in NSW government schools, 2014

Course Name	Units	Year 11			Year 12		
		Boys	Girls	Total	Boys	Girls	Total
Aboriginal Studies	2	188	396	584	96	268	364
Aboriginal Studies Life Skills	2	10	8	18	4	13	17
Aged Care Specialisation Study	1			0	2	2	4
Agriculture	2	766	668	1,434	450	544	994
Agriculture Life Skills	2	42	20	62	32	7	39
Ancient History	2	3,779	5,118	8,897	2,774	3,885	6,659
Arabic Beginners	2	2	3	5			
Arabic Continuers	2	63	107	170	61	91	152
Arabic Extension	1				16	33	49
Armenian Continuers	2		3	3	2	1	3
Automotive	2	60	8	68	9		9
Automotive	4	3		3			
Automotive Examination	2				2		2
Biology	2	5,123	8,212	13,335	3,666	6,066	9,732
Business and Economics Life Skills	2	11	15	26	15	11	26
Business Services	2	368	939	1,307	255	857	1,112
Business Services	4		2	2	22	37	59
Business Services Examination	2				144	577	721
Business Services Specialisation Study	2					1	1
Business Studies	2	5,771	5,760	11,531	4,120	4,180	8,300
Chemistry	2	5,187	4,346	9,533	3,628	3,032	6,660
Chinese Background Speakers	2	316	385	701	210	278	488
Chinese Beginners	2	12	20	32	12	22	34
Chinese Continuers	2	16	35	51	13	11	24
Chinese Extension	1				4	3	7
Citizenship and Legal Studies Life Skills	2	58	35	93	64	35	99
Community and Family Studies	2	631	6,296	6,927	283	4,493	4,776
Community and Family Studies Life Skills	2	29	80	109			
Community Pharmacy Specialisation Study	1		1	1			
Community Pharmacy Specialisation Study	2	1	2	3		1	1
Construction	2	3,161	91	3,252	1,931	48	1,979
Construction	4	82		82	70	7	77
Construction Examination	2				1,307	34	1,341
Creative Arts Life Skills	2	309	180	489	261	143	404
Croatian Continuers	2	1	2	3	3	1	4
Dance	2	53	843	896	47	593	640
Dance Life Skills	2	2	13	15	5	11	16
Design and Technology	2	1,458	734	2,192	820	542	1,362
Design and Technology Life Skills	2	31	17	48	33	4	37
Drama	2	1,056	2,278	3,334	771	1,777	2,548
Drama Life Skills	2	22	28	50	12	22	34
Earth and Environmental Science	2	710	515	1,225	479	387	866
Economics	2	2,185	1,344	3,529	1,540	980	2,520
Electrotechnology	2	13	1	14	2		2
Electrotechnology	4	4		4			
Engineering Studies	2	2,258	145	2,403	1,411	93	1,504
English (Advanced)	2	6,373	9,348	15,721	5,196	7,905	13,101
English (Standard)	2	10,887	10,260	21,147	9,276	9,556	18,832
English as a Second Language	2	1,164	1,058	2,222	853	937	1,790
English Extension	1	1,408	2,477	3,885			
English Extension 1	1				729	1,630	2,359
English Extension 2	1				252	627	879
English Life Skills	2	962	547	1,509	846	442	1,288
Entertainment Industry	2	456	583	1,039	346	386	732
Entertainment Industry	4				12	4	16

Table 22

## Course enrolments in Year 11 and Year 12 subjects in NSW government schools, 2014 (continued)

Course Name	Units	Year 11			Year 12		
		Boys	Girls	Total	Boys	Girls	Total
Entertainment Industry Examination	2				272	317	589
Filipino Continuers	2	4	8	12	2	9	11
Financial Services	2	1	2	3	3	4	7
Financial Services Examination	2				1	1	2
Food Technology	2	1,030	2,244	3,274	647	1,764	2,411
Food Technology Life Skills	2	244	150	394	135	80	215
French Beginners	2	137	571	708	88	410	498
French Continuers	2	65	280	345	50	229	279
French Extension	1				12	41	53
Fundamentals of English	2	208	181	389			
Fundamentals of English (Part 1)	1	280	321	601			
Fundamentals of English (Part 2)	1	14	27	41			
Geography	2	1,426	1,177	2,603	993	843	1,836
Geography Life Skills	2	69	21	90	38	26	64
German Beginners	2	35	64	99	9	28	37
German Continuers	2	72	65	137	47	95	142
German Extension	1				16	14	30
Heritage Chinese (Mandarin)	2	26	99	125	29	66	95
Heritage Indonesian	2	1	4	5		1	1
Heritage Japanese	2	6	10	16	6	9	15
Heritage Korean	2	27	52	79	11	26	37
Hindi Continuers	2	4	15	19	7	5	12
History Extension	1				279	538	817
History Life Skills	2	89	38	127	80	49	129
Hospitality	2	2,181	4,756	6,937	1,562	3,695	5,257
Hospitality	4	49	61	110	51	92	143
Hospitality Examination	2				1,182	3,019	4,201
Hospitality Specialisation Study	1		2	2	61	102	163
Hospitality Specialisation Study	2	6	7	13	12	48	60
Human Services	2	18	99	117	22	197	219
Human Services	4	8	36	44			
Human Services Examination	2				10	97	107
Human Society and its Environment Life Skills	2	350	199	549	246	124	370
Hungarian Continuers	2	2	3	5	3	2	5
Indonesian Background Speakers	2	1	4	5	1	4	5
Indonesian Beginners	2	5	22	27	17	19	36
Indonesian Continuers	2	10	33	43	9	29	38
Indonesian Extension	1				2	4	6
Industrial Technology	2	5,549	745	6,294	3,140	425	3,565
Industrial Technology Life Skills	2	101	16	117	82	2	84
Information and Digital Technology	2	813	214	1,027	600	113	713
Information and Digital Technology	4	15		15	9	4	13
Information and Digital Technology Examination	2				502	96	598
Information and Digital Technology Specialisation Study	1				8	1	9
Information and Digital Technology Specialisation Study	2				4		4
Information and Digital Technology Specialisation Study	3	7	1	8			
Information Processes and Technology	2	1,892	397	2,289	1,235	330	1,565
Information Processes and Technology Life Skills	2	55	14	69	26	9	35
Italian Beginners	2	75	212	287	44	125	169
Italian Continuers	2	21	69	90	23	43	66
Italian Extension	1				8	5	13
Japanese Background Speakers	2	9	5	14	3	5	8
Japanese Beginners	2	386	485	871	227	321	548
Japanese Continuers	2	213	379	592	142	285	427
Japanese Extension	1				44	98	142

Table 22

## Course enrolments in Year 11 and Year 12 subjects in NSW government schools, 2014 (continued)

Course Name	Units	Year 11			Year 12		
		Boys	Girls	Total	Boys	Girls	Total
Khmer Continuers	2	5	4	9	10	7	17
Korean Background Speakers	2	35	41	76	13	43	56
Korean Continuers	2	1	15	16	2	10	12
Latin Continuers	2	34	40	74	17	36	53
Latin Extension	1				10	29	39
Legal Studies	2	3,288	5,017	8,305	2,216	3,659	5,875
Macedonian Continuers	2	6	6	12	5	14	19
Mathematics	2	7,288	6,153	13,441	4,687	4,164	8,851
Mathematics Extension	1	3,894	3,011	6,905			
Mathematics Extension 1	2				3,024	2,159	5,183
Mathematics Extension 2	2				1,310	793	2,103
Mathematics General	2	13,115	12,192	25,307			
Mathematics General 2	2				8,511	9,255	17,766
Mathematics Life Skills	2	964	533	1,497	801	417	1,218
Metal and Engineering	2	1,407	42	1,449	1,008	34	1,042
Metal and Engineering	4	10		10	13		13
Metal and Engineering Examination	2				644	28	672
Metal and Engineering Specialisation Study	2	7		7	1		1
Modern Greek Beginners	2	9	24	33	10	14	24
Modern Greek Continuers	2	11	35	46	9	18	27
Modern Greek Extension	1				5	6	11
Modern Hebrew Continuers	2				1	1	2
Modern History	2	3,670	4,146	7,816	2,554	2,928	5,482
Music 1	2	2,081	1,936	4,017	1,712	1,452	3,164
Music 2	2	274	268	542	181	207	388
Music Extension	1				124	116	240
Music Life Skills	2	72	53	125	51	34	85
Persian Background Speakers	2	20	13	33	12	7	19
Personal Development, Health & PE Life Skills	2	713	368	1,081	588	283	871
Personal Development, Health and Physical Education	2	4,945	5,587	10,532	3,498	4,372	7,870
Physics	2	6,028	1,815	7,843	4,412	1,181	5,593
Polish Continuers	2	3	4	7	5	4	9
Portuguese Continuers	2	1	5	6	4	1	5
Primary Industries	2	747	438	1,185	465	310	775
Primary Industries	4	6	1	7	3	6	9
Primary Industries Examination	2				322	261	583
Primary Industries Specialisation Study	2	16		16	27	4	31
Retail Operations Extension	1	1	8	9			
Retail Services	2	694	1,460	2,154	447	996	1,443
Retail Services	4	3	17	20	67	39	106
Retail Services Examination	2				331	716	1,047
Russian Background Speakers	2				5	9	14
Russian Continuers	2	8	11	19			
Science Life Skills	2	471	248	719	378	156	534
Senior Science	2	1,822	1,358	3,180	2,164	1,944	4,108
Serbian Continuers	2	6	10	16	3	8	11
Society and Culture	2	1,103	3,753	4,856	609	2,347	2,956
Society and Culture Life Skills	2	17	9	26	16	13	29
Software Design and Development	2	1,877	135	2,012	1,018	85	1,103
Spanish Beginners	2	43	157	200	43	112	155
Spanish Continuers	2	26	78	104	30	56	86
Spanish Extension	1				7	17	24
Studies of Religion I	1	357	458	815	127	231	358
Studies of Religion I Life Skills	1		1	1			
Studies of Religion II	2	207	825	1,032	153	542	695

Table 22

## Course enrolments in Year 11 and Year 12 subjects in NSW government schools, 2014 (continued)

Course Name	Units	Year 11			Year 12		
		Boys	Girls	Total	Boys	Girls	Total
Studies of Religion II Life Skills	2	1	3	4	2	1	3
Tamil Continuers	2		3	3			
Technology Life Skills	2	311	149	460	243	137	380
Textiles and Design	2	45	1,444	1,489	13	1,141	1,154
Textiles and Design Life Skills	2	7	20	27	1	22	23
Tourism and Events	2				2	7	9
Tourism and Events Examination	2				2	5	7
Tourism, Travel and Events	2	1	15	16			
Turkish Continuers	2	6	15	21	5	14	19
Ukrainian Continuers	2		2	2	1	1	2
Vietnamese Continuers	2	67	93	160	58	81	139
Visual Arts	2	2,226	5,147	7,373	1,409	3,914	5,323
Visual Arts Life Skills	2	191	144	335	178	108	286
Work and the Community Life Skills	2	642	392	1,034	531	296	827

Course Name	Units	Year 11			Year 12		
		Boys	Girls	Total	Boys	Girls	Total
Automotive School-based Apprenticeship	2				3		3
Hospitality School-based Apprenticeship Specialisation	2				1		1
Metal and Engineering School-based Apprenticeship	2				1		1
Metal and Engineering School-based Apprenticeship	4	1		1			

**Source:** Department of Education, data derived from Board of Studies data.

**Notes:**

- Based on school of tuition, board developed courses only, and includes subjects studied through distance education, the Open High School and Saturday School of Community Languages.

**Table 23**

**Apparent retention in NSW government schools, 2004-2014**

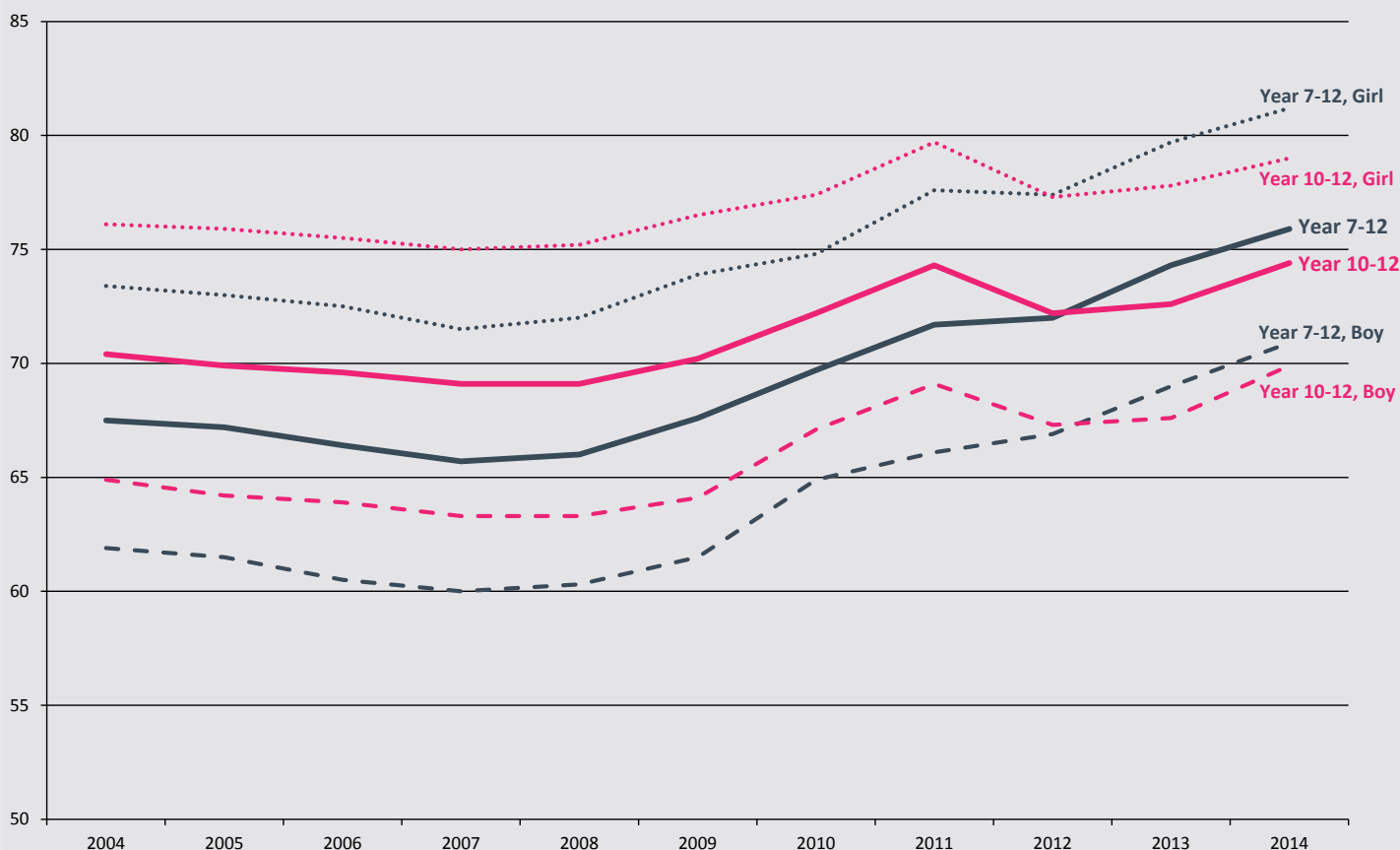
Year	Year 7-10			Year 7-11			Year 7-12			Year 10-11			Year 10-12		
	Boy	Girl	Total	Boy	Girl	Total	Boy	Girl	Total	Boy	Girl	Total	Boy	Girl	Total
2004	94.7	96.0	95.4	74.3	83.7	78.9	61.9	73.4	67.5	77.5	87.0	82.2	64.9	76.1	70.4
2005	94.8	95.4	95.1	72.5	83.2	77.7	61.5	73.0	67.2	76.5	86.6	81.4	64.2	75.9	69.9
2006	95.2	95.8	95.5	73.1	83.1	78.0	60.5	72.5	66.4	77.1	87.1	82.0	63.9	75.5	69.6
2007	96.0	96.6	96.3	73.9	83.8	78.7	60.0	71.5	65.7	77.6	87.5	82.4	63.3	75.0	69.1
2008	96.6	96.6	96.6	73.9	84.0	78.8	60.3	72.0	66.0	77.0	86.9	81.9	63.3	75.2	69.1
2009	95.6	97.4	96.5	77.3	85.1	81.1	61.5	73.9	67.6	80.0	88.1	84.0	64.1	76.5	70.2
2010	99.4	100.2	99.8	81.1	89.7	85.3	64.9	74.8	69.7	84.8	92.2	88.4	67.1	77.4	72.2
2011	102.2	102.4	102.3	83.3	91.3	87.2	66.1	77.6	71.7	83.7	91.1	87.3	69.1	79.7	74.3
2012	101.4	102.8	102.1	86.1	93.3	89.6	66.9	77.4	72.0	84.3	91.0	87.6	67.3	77.3	72.2
2013	102.0	102.1	102.0	88.1	94.6	91.3	69.0	79.7	74.3	86.9	92.0	89.4	67.6	77.8	72.6
<b>2014</b>	<b>103.0</b>	<b>103.2</b>	<b>103.1</b>	<b>89.3</b>	<b>94.9</b>	<b>92.1</b>	<b>70.9</b>	<b>81.2</b>	<b>75.9</b>	<b>87.6</b>	<b>92.9</b>	<b>90.2</b>	<b>69.9</b>	<b>79.0</b>	<b>74.4</b>

**Notes:**

- Apparent retention is based on full-time equivalent units (FTEs), including full-time and part-time students. Students enrolled in distance education classes are included with their appropriate grade levels.
- Legislation raising the minimum school leaving age from 15 to 17 came into effect in January 2010. The Year 12 cohort in 2012 was the first group of students who were required to complete Year 10. This meant that the Year 10 enrolment figure was higher than in previous years, resulting in a relative decline in Year 10 to Year 12 apparent retention in 2012, despite the Year 7 to Year 12 apparent retention rate increasing slightly.
- See explanatory note 9.

**Figure 6**

**Apparent retention (%) in NSW government schools, 2004-2014**



**Table 24****NSW government school HSC completions, Year 12 students only, 2004-2014**

<b>Number of Students</b>	<b>2004</b>	<b>2005</b>	<b>2006</b>	<b>2007</b>	<b>2008</b>	<b>2009</b>	<b>2010</b>	<b>2011</b>	<b>2012</b>	<b>2013</b>	<b>2014</b>
HSC Record of Achievement (All Students)	38,883	38,175	37,739	38,275	38,815	39,164	41,347	41,987	42,452	43,694	44,511
HSC Record of Achievement (Aboriginal Students)	573	626	646	736	824	906	991	1,082	1,242	1,381	1,386
HSC Award (All Students)	36,660	35,917	35,460	35,854	36,468	36,465	38,181	38,661	38,774	38,908	39,340
HSC Award (Aboriginal Students)	528	574	603	674	755	815	862	919	1,061	1,150	1,139

**Notes:**

- HSC Record of Achievement includes those students awarded an HSC.
- HSC Record of Achievement includes students who participated in HSC pathways.
- HSC pathways offer a flexible program for students to complete the HSC over a period of up to five years. The pathways provisions include accumulating courses, repeating courses, acceleration, recognition of prior learning, and combining study with part-time traineeships or apprenticeships.
- Bradfield college included.
- See explanatory note 13.

**Table 25**

**Schools attendance rates by Aboriginality and year level, 2014**

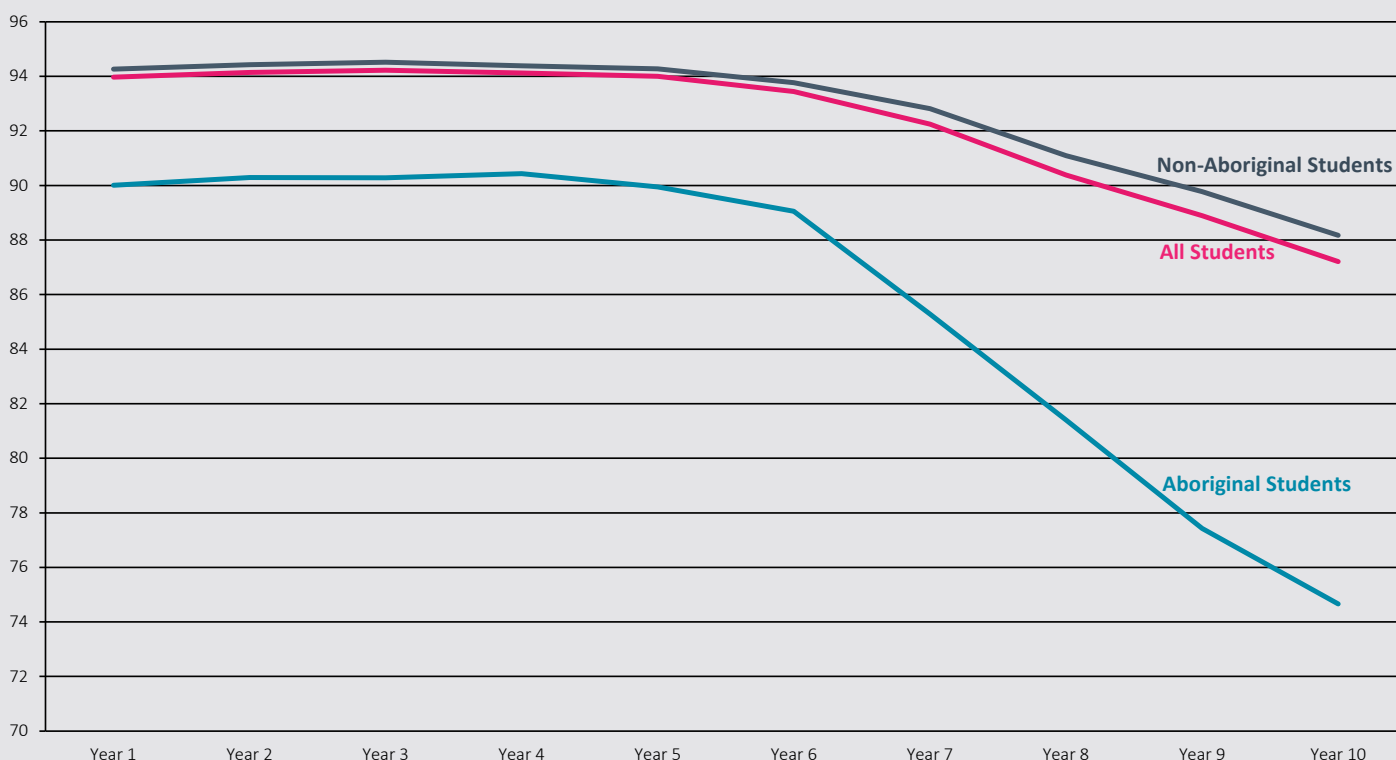
Grade	Semester 1 (%)			Semester 2 (%)			Full Year (%)		
	Aboriginal	Non-Aboriginal	All Students	Aboriginal	Non-Aboriginal	All Students	Aboriginal	Non-Aboriginal	All Students
Year 1	90.9	95.0	94.7	88.9	93.3	93.0	90.0	94.3	94.0
Year 2	91.2	95.2	94.9	89.2	93.5	93.2	90.3	94.4	94.1
Year 3	91.2	95.3	95.0	89.2	93.6	93.3	90.3	94.5	94.2
Year 4	91.3	95.1	94.9	89.4	93.4	93.2	90.4	94.4	94.1
Year 5	90.9	95.0	94.8	88.8	93.3	93.0	89.9	94.3	94.0
Year 6	90.2	94.5	94.2	87.7	92.8	92.4	89.1	93.8	93.4
Primary Support	88.4	92.1	91.5	86.2	90.1	89.4	87.4	91.2	90.6
<b>Primary Total</b>	<b>90.9</b>	<b>95.0</b>	<b>94.7</b>	<b>88.8</b>	<b>93.3</b>	<b>93.0</b>	<b>89.9</b>	<b>94.2</b>	<b>93.9</b>
Year 7	87.0	93.8	93.3	83.1	91.6	91.0	85.3	92.8	92.2
Year 8	82.8	91.8	91.1	79.7	90.3	89.5	81.4	91.1	90.4
Year 9	79.1	90.5	89.7	75.3	88.8	87.9	77.4	89.8	88.9
Year 10	76.4	89.0	88.1	72.5	87.2	86.2	74.7	88.2	87.2
Secondary Support	75.3	86.2	84.4	74.6	84.3	82.7	75.0	85.3	83.6
<b>Secondary Total</b>	<b>80.9</b>	<b>91.1</b>	<b>90.3</b>	<b>77.5</b>	<b>89.3</b>	<b>88.4</b>	<b>79.4</b>	<b>90.3</b>	<b>89.4</b>
<b>Yr1 - Yr10 (Inc. Support)</b>	<b>87.1</b>	<b>93.6</b>	<b>93.1</b>	<b>84.5</b>	<b>91.9</b>	<b>91.3</b>	<b>85.9</b>	<b>92.8</b>	<b>92.3</b>

**Notes:**

- The attendance data are for full-time, Year 1-10 students only (including Support).
- All students in Years 1 to 10 in NSW government schools are regarded as full-time.
- Ungraded students in NSW Government Schools are classified as either primary or secondary according to their level of education.
- For more detailed analysis of Semester 1 school attendance, please refer to **CESE Bulletin Issue 12 - School Attendance 2014 (Semester 1)**.
- See explanatory note 11.

**Figure 7**

**Full year attendance rates (%) in NSW government schools, Aboriginal, non-Aboriginal and all students, Years 1-10, 2014**



**Notes:**

- Full year data includes both Semesters 1 and 2
- Excludes Kindergarten, Years 11 and 12, primary support and secondary support



---

## Explanatory Notes

Each year the education departments of all states and territories in Australia, and the Australian Government Department of Education and Training collect data on government and non-government schools, and their students. Since 1994 the date for collection has been the first Friday in August, as close as possible with the national Census of Population and Housing conducted every five years. The 2014 census of NSW Government schools was conducted on August 1st. Initial results were published in CESE Bulletin Issue 13, Inbrief Mid-year Census, 2014.

In 1996, there were changes to the collection dates for some of the information reported in this bulletin. Data on students by age, gender and year of schooling, for all students and for Aboriginal and Torres Strait Islander students, are collected at the mid-year census. Data on students of non-English speaking background are collected in Term 1.

This Bulletin consolidates data from the Department's Term 1 and midyear data collections. It also reports on non-government data collected by the Australian Government Department of Education and Training.

Government and non-government school data form part of the National Schools Statistics Collection which is reported annually by the Australian Bureau of Statistics in Schools Australia (Catalogue No. 4221.0).

### 1. Primary and Secondary Schools

Primary schools enrol students in Kindergarten to Year 6; secondary schools generally enrol students in Years 7 to 12, although some secondary schools only enrol students in the senior years, i.e. Years 11 to 12 or the junior years, i.e. Years 7 to 10.

### 2. Central/Community Schools

Central/community schools have primary and secondary departments and may be established where there is an enrolment in secondary classes of 20 or more. Enrolments in primary departments and secondary departments are included with the appropriate student data.

### 3. Schools for Specific Purposes

Schools for specific purposes (SSPs) are for students with specific needs. Students in SSPs are reported according to the type of specific need rather than by their year of schooling. Students with multiple disabilities are reported according to their main disability.

Most schools for specific purposes have permanent enrolments and include schools for students with intellectual (mild, moderate and severe) and physical disabilities, visual or hearing impairment, behaviour disorders or emotional disturbance, and students in juvenile justice centres. Some SSPs have no permanent enrolments because the children temporarily attending them are enrolled and counted in their own schools. These are mainly hospital schools.

### 4. Support Classes

Some students with specific needs are enrolled in support classes in primary, secondary and central schools. Students enrolled in support classes are reported according to the type of specific need rather than by their year of schooling. Support classes for students of mixed abilities are classified according to the predominant type of specific need present in the class. Support class enrolments are included with other primary and secondary enrolments in some tables; other tables combine enrolments in support classes in ordinary schools with enrolments in SSPs.

### 5. Distance Education

Distance education centres (DECs) provide schooling for students who are isolated or whose special circumstances prevent them from attending a regular school. They operate either as separate schools or as units within regular primary, central and high schools. Students enrolled in DECs are counted in their corresponding years of schooling.

In conjunction with the Open High School, DECs also provide individual subject enrolment, widening study opportunities for secondary students. These students are enrolled and counted at their home schools.

### 6. Part-time Students

Students in Years 11 or 12 can enrol to study as a part-time student or a full-time student. For the annual census, a part-time student is enrolled in less than 10 units, regardless of where those units are studied. All Kindergarten to Year 10 students are considered to be full-time.

### 7. Full-time Equivalent Enrolments

Following the introduction of part-time study in secondary schools in 1993, student enrolments are generally reported in full-time equivalent units (FTE). The FTE for students studying less than 10 units, the minimum workload, is determined by the formula:  $0.1 \times$  the number of units studied and represented as a proportion of the full-time enrolment of 1.0 FTE.

### 8. Aboriginal and Torres Strait Islander Students

Students are counted as Aboriginal or Torres Strait Islanders (A&TSI) if they are identified and accepted as such by the community with which they are associated, and they identify themselves on the School Enrolment Form.

### 9. Apparent Retention Rates (ARR)

Retention rates are 'apparent' as they do not track individual students through their final years of secondary schooling. What they measure is the ratio of the total number of full-time school students in a designated year (e.g. Year 12 in 2014) divided by the total number of full-time students in a previous

year (e.g. Year 7 in 2009). This would be the Year 7 to 12 apparent retention rate in 2014.

Care should be taken in the interpretation of apparent retention rates, which can exceed 100%, because the method of calculation does not take into account a range of factors such as migration, interstate movements of students, transfers to and from non-government schools, part-time schooling, students repeating a year of schooling, or students pursuing other education and training pathways.

## 10. Students of Language Background other than English (LBOTE)

Students are counted as being of language background other than English if in their home a language other than English is spoken by the students, parents or guardians.

## 11. Attendance

Government school systems in Australia measure attendance rates throughout the first semester (terms 1 and 2). This is the time period specified for data collection in National Education Agreements between the Commonwealth and state and territory governments. Schools for Special Purposes' attendance data is not collected.

The attendance rate is defined as the number of actual full time equivalent 'student days attended' over the collection period as a percentage of the total number of possible student days attended over the collection period (Measurement Framework for Schooling in Australia KPM 7(b)).

## 12. Class Size

The audit of class sizes in NSW government primary schools is undertaken in March each year. The audit does not include schools for specific purposes, distance education centres or intensive English centres.

The number of classes, average class sizes and enrolment numbers exclude support classes in primary and central schools.

## 13. Higher School Certificate (HSC)

The Higher School Certificate is the highest educational award in secondary education in New South Wales. It is awarded to students who have satisfactorily completed Years 11 and 12 at secondary school. To be eligible, students must meet HSC course requirements and sit for the statewide HSC examinations.

## 14. Colleges

The secondary schools in some areas have been transformed into colleges in order to provide broader opportunities and better facilities for students. A college is the amalgamation of all the secondary schools within a specific area. Each former secondary school has become a campus of their college. A senior college campus is generally for students in Years 11 and 12 but in some cases, may include Year 10 students. The

colleges have formed cooperative ventures with TAFE Institutes and universities. They offer a wide range of options from specialist senior Higher School Certificate courses to school re-entry courses.

## 15. Family Occupation and Education Index

The Family Occupation and Education Index (FOEI) is a school-level index of educational disadvantage related to socio-economic background. It has been selected as the basis of the equity loading for socio-economic background in the Department's new Resource Allocation Model.

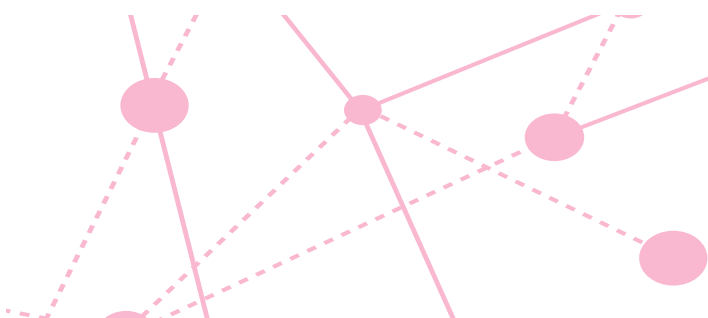
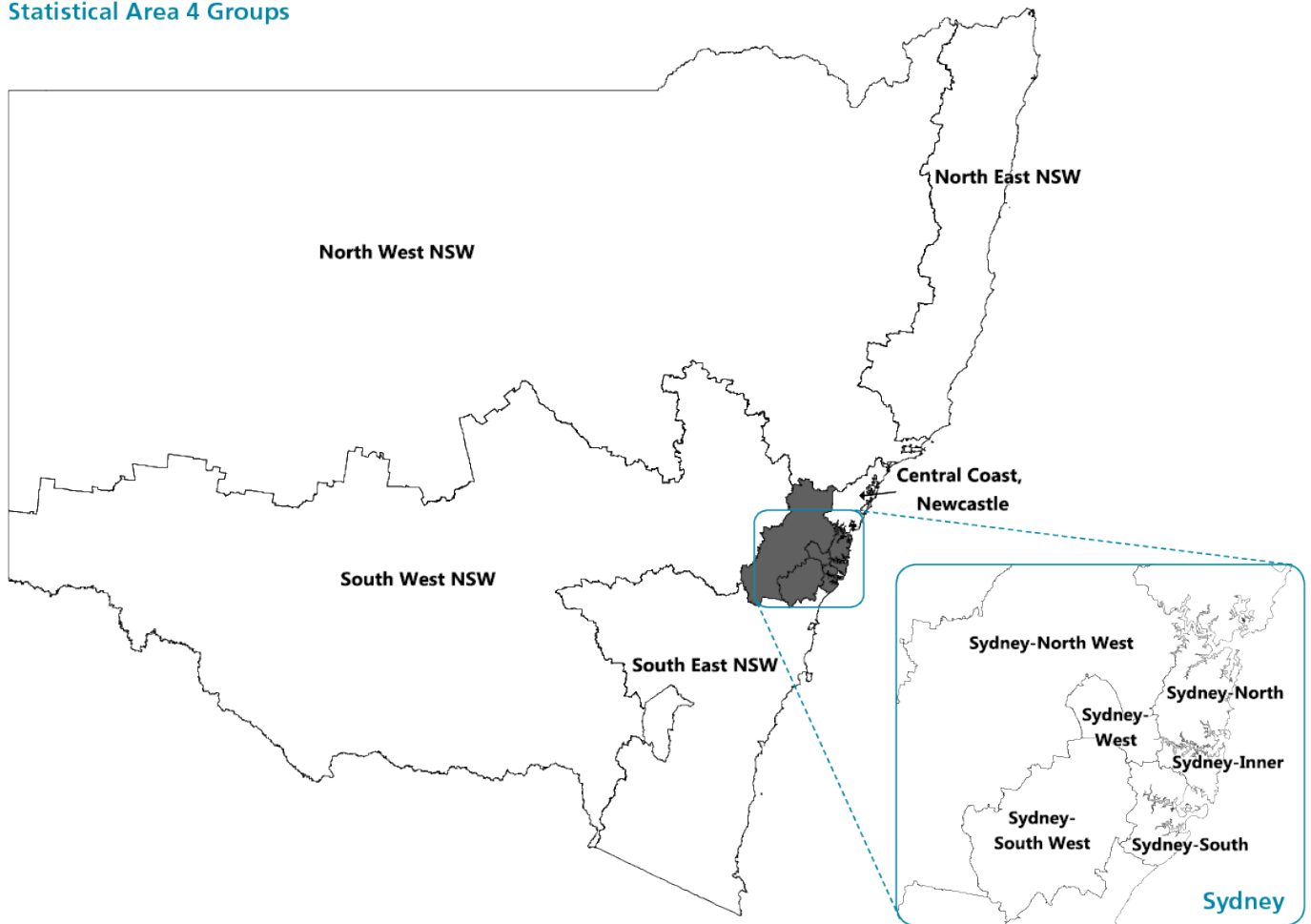
FOEI is constructed from parental education and occupation information collected from student enrolment forms and recorded in the Enrolment Registration Number system. FOEI uses a statistical regression model to produce a weighted combination of school-level parental education and occupation variables based on the extent to which each variable uniquely predicts average school performance.

## 16. Statistical Area 4 Groupings

Previous publications of the Statistical Bulletin compared enrolments in DEC regions. From 2014 these geographies have been discontinued and replaced with a geographical structure based on the new ABS Australian Statistical Geography Standard (ASGS). Groups of ASGS Statistical Area 4 (SA4) boundaries in New South Wales have been combined into 11 groups for reporting and publication of Department data.

Name of SA4 Groupings	SA4 Name
Sydney-North	» Sydney - North Sydney and Hornsby, » Sydney - Northern Beaches, » Sydney - Ryde
Sydney-Inner	» Sydney - City and Inner South, » Sydney - Eastern Suburbs, » Sydney - Inner West
Sydney-South	» Sydney - Inner South West, » Sydney - Sutherland
Sydney-South West	» Sydney - Outer South West, » Sydney - South West
Sydney-West	» Sydney - Blacktown, » Sydney - Parramatta
Sydney-North West	» Sydney - Baulkham Hills and Hawkesbury, » Sydney - Outer West and Blue Mountains
North East NSW	» Coffs Harbour - Grafton, » Mid North Coast, Richmond - Tweed
North West NSW	» Hunter Valley exc Newcastle, » Far West and Orana, » New England and North West
South West NSW	» Central West, » Murray, » Riverina
South East NSW	» Capital Region, » Illawarra, » Southern Highlands and Shoalhaven
Central Coast, Newcastle	» Central Coast, » Newcastle and » Lake Macquarie

## Statistical Area 4 Groups



### Contact Details

For more information about the Centre for Education Statistics and Evaluation, please contact us:

☎ 02 9561 1211

@ cese@det.nsw.edu.au

🌐 www.cese.nsw.gov.au

Centre for Education Statistics and Evaluation  
GPO Box 33  
Sydney NSW 2001  
Australia

 02 9561 8000

 [cese@det.nsw.edu.au](mailto:cese@det.nsw.edu.au)

 [www.cese.nsw.gov.au](http://www.cese.nsw.gov.au)

© September 2015  
NSW Department of Education

