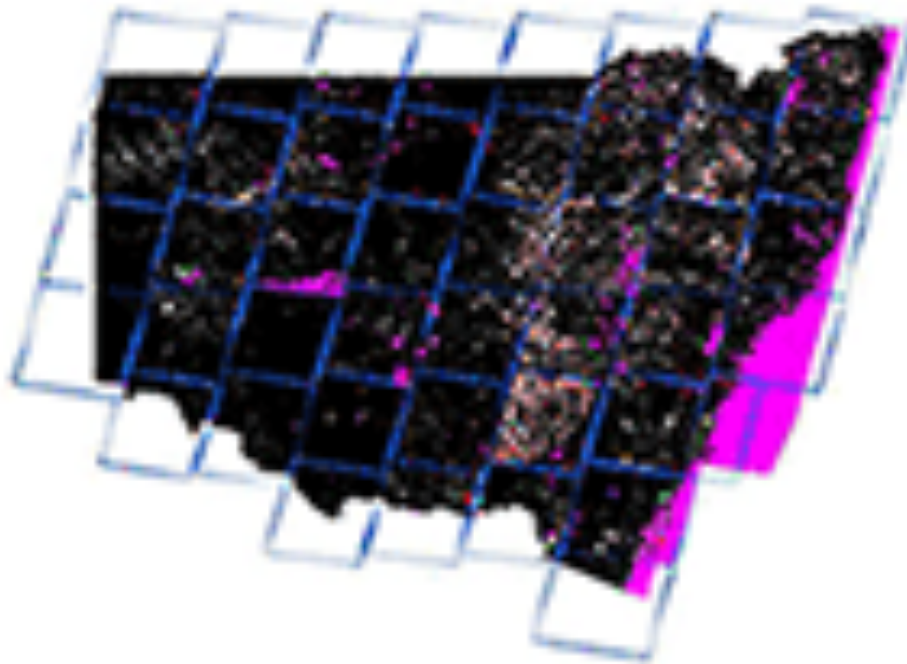


NSW Foundation Spatial Data Framework:

Land Cover Theme

Dataset/product title: NSW SLATS LANDSAT Woody Change: Derived Vector Database 1988 - 2010



Data overview of LANDSAT Woody Change Tiles © Office of Environment and Heritage 2015

Dataset/product description	<p>This dataset was derived from the primary 'SLATS Landsat woody change data (25m) for 1988 - 2010' raster (grid) layers used to generate the annualised woody vegetation change rates for the 2010 NSW Annual Report of Native Vegetation. This data describes the areas and type of woody vegetation change (loss) based on the analysis of multi-date Landsat imagery covering NSW.</p> <p>This data is based on a biennial LANDSAT coverage between 1988-2006 and annual coverage 2006-2010. LANDSAT Imagery 1988-2008 was processed by Geosciences Australia at 25m resolution.</p> <p>2008 onwards is based on USGS processed LANDSAT at 30m resolution. Note, this vector data may generate slightly different aerial statistics to those generated from the source raster data. This is due to variation caused by the data transformation and vector cleaning processes applied in generating the vector data.</p>
Dataset uses	<p>This vector change dataset was prepared by the NSW SLATS to provide users with a more convenient means of analysing the area and type of woody vegetation change (loss).</p>

Current Status	Ongoing
Standards and specifications	<p>The raster data has been converted to polygon format with a buffer of 1mm applied - adjoining adjacent pixels into a single polygon feature.</p> <p>Each SLATS epoch is a single feature class in the Gedodatabase. Each Feature class identifies the SLATS scene name, satellite image, dates, number days between images, major category of the type of interpreted change according to the SLATS change sub categories.</p> <p>Efforts have been made to minimise topology errors in each of the feature classes.</p>
Access and licensing	For access and licencing please contact: info@environment.nsw.gov.au
Metadata	NSW SLATS Woody Change: Derived Vector Database 1988-2010
Updates	The update of this product will follow the update of the raster woody vegetation change analysis.
Custodian agency and contact	Office of Environment and Heritage Head Office PO Box A290 Sydney South NSW 1232 Email: info@environment.nsw.gov.au
Aggregator(s)	Office of Environment and Heritage Head Office PO Box A290 Sydney South NSW 1232 Email: info@environment.nsw.gov.au
Distributor(s)	Office of Environment and Heritage Head Office PO Box A290 Sydney South NSW 1232 Email: info@environment.nsw.gov.au
Additional comments	<p>The underlying methodology was developed over many years by the Queensland Department of Environment and Resource Management as a scientific approach to report change in woody vegetation and is known as the Statewide Landcover and Trees Study (SLATS).</p> <p>The underlying process is based on the published SLATS methods, which include both automated analysis of satellite imagery, and visual checking and editing of the change images by locally based specialist staff. During the editing process the interpreted/intended use is identified by specialist staff. The major categories assigned the woody change (loss) are Fire Activity, Agricultural Activity, Infrastructure and Forestry Activity. Within each of these major classes there are a series of subclasses which identify the specific type of activity - where applicable.</p>