

NSW Foundation Spatial Data Framework:

Elevation and Depth Theme

Dataset/product title: Point Cloud

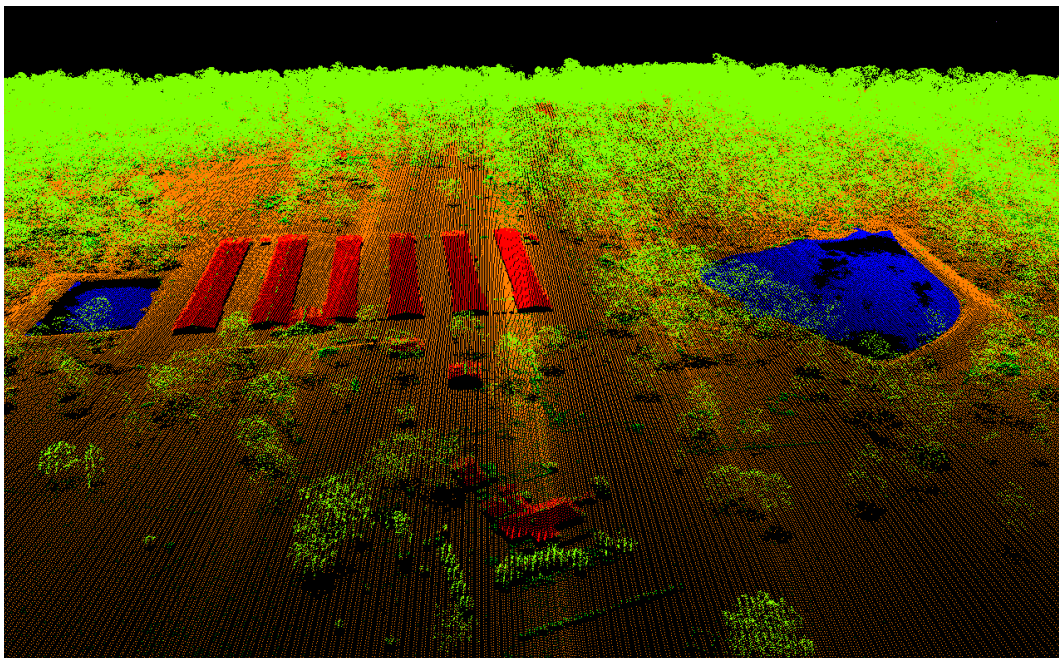


Image depicts sample of the NSW Point Cloud dataset © Spatial Services 2018

Dataset/product description	The point cloud data set consists of point clouds captured from LiDAR (Light Detection and Ranging) and derived from airborne imagery using photogrammetric techniques.
Dataset uses	This product has been produced for Spatial Services, local and state government and agency programs including Emergency Services. This product is also used on a whole of government basis as a visible record of the landscape at a given point in time, allowing for analysis to be carried out relating to flood modelling and water catchment management.
Current status	<p>The LiDAR program is focused on the entire coast of NSW and west to the Great Dividing Range. Additionally, the program extends to rural towns in the central and western Divisions.</p> <p>Photogrammetric point clouds have been generated from airborne imagery for the central and western divisions of NSW.</p>

<p>Standards and specifications</p>	<p>Metadata for the relevant Spatial Services datasets complies with AS/NZS ISO 19115-2, ANZLIC Metadata Profile v1.1 and ISO 19139</p> <p>Intergovernmental Committee on Surveying and Mapping (ICSM) Guidelines for Digital Elevation Data</p> <p>Spatial Services: Elevation Data Products Specification and Description (LiDAR)</p> <p>Spatial Services: Elevation Data Products Specification and Description (Airborne Photogrammetry)</p>
<p>Access and licensing</p>	<p>Spatial Services, a division of the Department of Finance, Services and Innovation (DFSI) creates and manages Intellectual Property for the Crown in right of New South Wales.</p> <p>Acquisition of this data is subject to the customer entering into an appropriate Creative Commons license agreement.</p> <p>To the extent that Creative Commons licensing applies, all data and other material produced by Spatial Services constitutes Crown copyright.</p> <p>Spatial Services has applied the Creative Commons Attribution 3.0 Australia Licence. Spatial Services asserts the right to be attributed as author of the original material in the following manner:</p> <div data-bbox="523 1196 938 1339" data-label="Image"> <p>The image shows the Creative Commons Attribution-NonCommercial 3.0 Australia License logo. It consists of three circular icons in a row: the first contains the letters 'CC', the second contains a stylized person icon, and the third contains an equals sign. Below these icons, the letters 'BY' and 'NC' are displayed in a bold, sans-serif font.</p> </div> <p>© Spatial Services [date of extraction]</p> <p>Additional terms for the use of Spatial Services material</p> <p>Any derived products which are created will be required to clearly mark the date that any extractions from the Spatial Services Spatial Database occurred.</p> <p>All Intellectual Property which is owned by Spatial Services should only be loaded on any external cloud platforms if Spatial Services' Intellectual Property remains unchanged, maintained and preserved.</p>
<p>Metadata</p>	<p>Point Cloud</p>
<p>Updates</p>	<p>LiDAR point cloud data is updated in specific locations across NSW as required. An update of the photogrammetrically derived point cloud is not planned.</p>

Custodian agency and contact	Name: DFSI Spatial Services Address: 346 Panorama Ave Bathurst NSW 2795 Email: SS-SDS@finance.nsw.gov.au
Aggregator(s)	Name: DFSI Spatial Services Address: 346 Panorama Ave Bathurst NSW 2795 Email: SS-Environmental@finance.nsw.gov.au
Distributor(s)	Name: DFSI Spatial Services Address: 346 Panorama Ave Bathurst NSW 2795 Email: SS-SDS@finance.nsw.gov.au